



# Heckaman Homes

MODEL HOMES ARE AVAILABLE FOR TOURS  
MONDAY - FRIDAY 9am - 5pm & SATURDAY 9-4

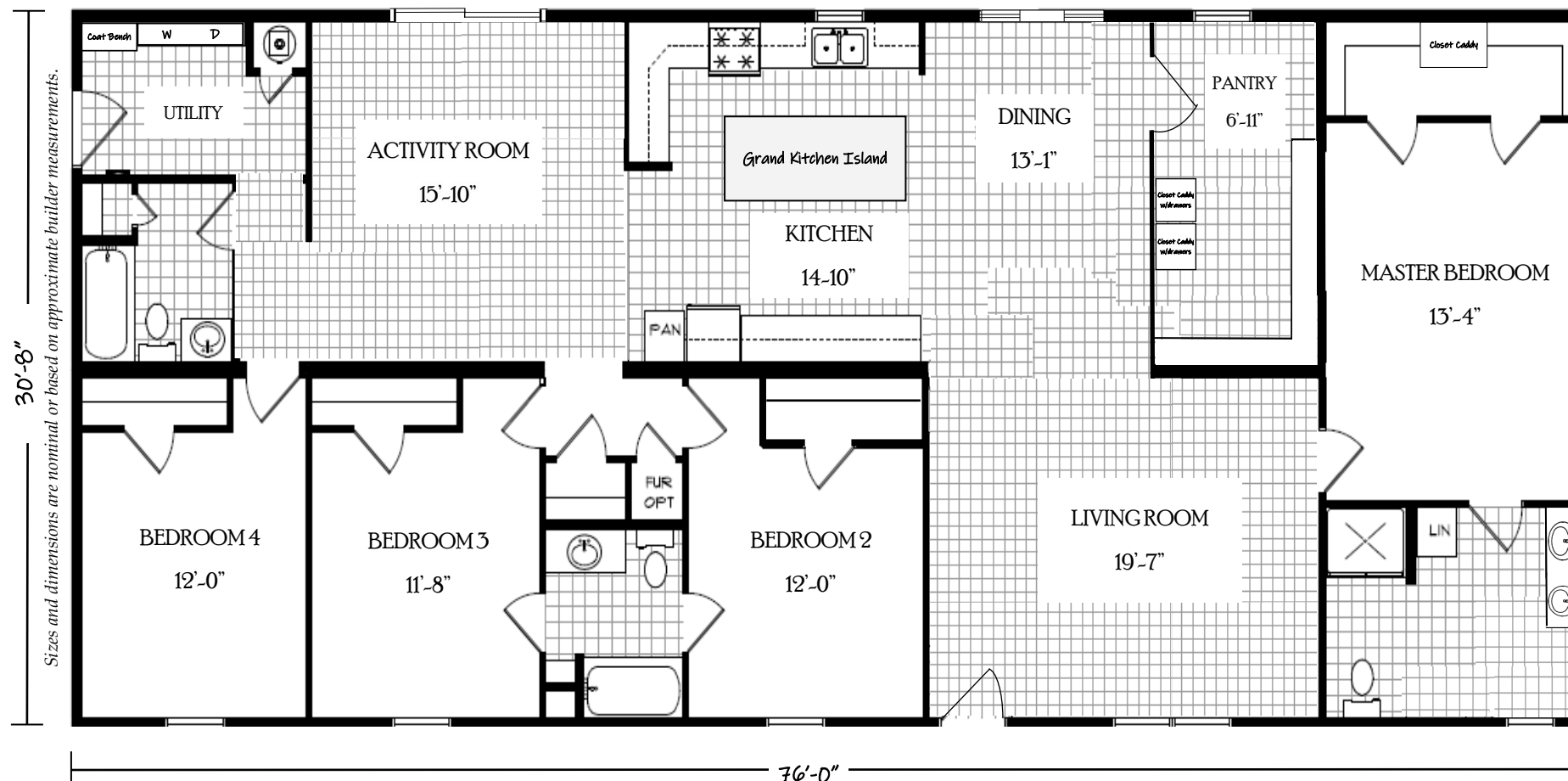
At Effingham Homes we believe that a house should be as unique as its inhabitants which is why we select and design our model homes to showcase a variety of floorplans, options and features available to you!

We are sure to have a floorplan with the options & features that you will love. But if you don't see something you are looking for please let us know, because each of our display homes offer multiple layouts and can be built to accommodate you and your family!

If for some reason our hours are not convenient and you need to schedule a private tour please call or email us and we will be happy to accommodate you!

Huron Forest - Modular Construction (Illinois State Code)

2,331 Square Feet · 4 Bedroom / 3 Bath · 32' x 76'



Love the floorplan - but maybe it's too big or maybe too small...

Floorplans similar to **The Huron Forest** are available in different sizes and can be built to meet either Modular Construction (State Code) or Manufactured Construction (National HUD Code)

The specific floorplan in our model home **#598** (as shown above) is based on the standard floorplan for **The Huron Forest** offered by MHE Inc.

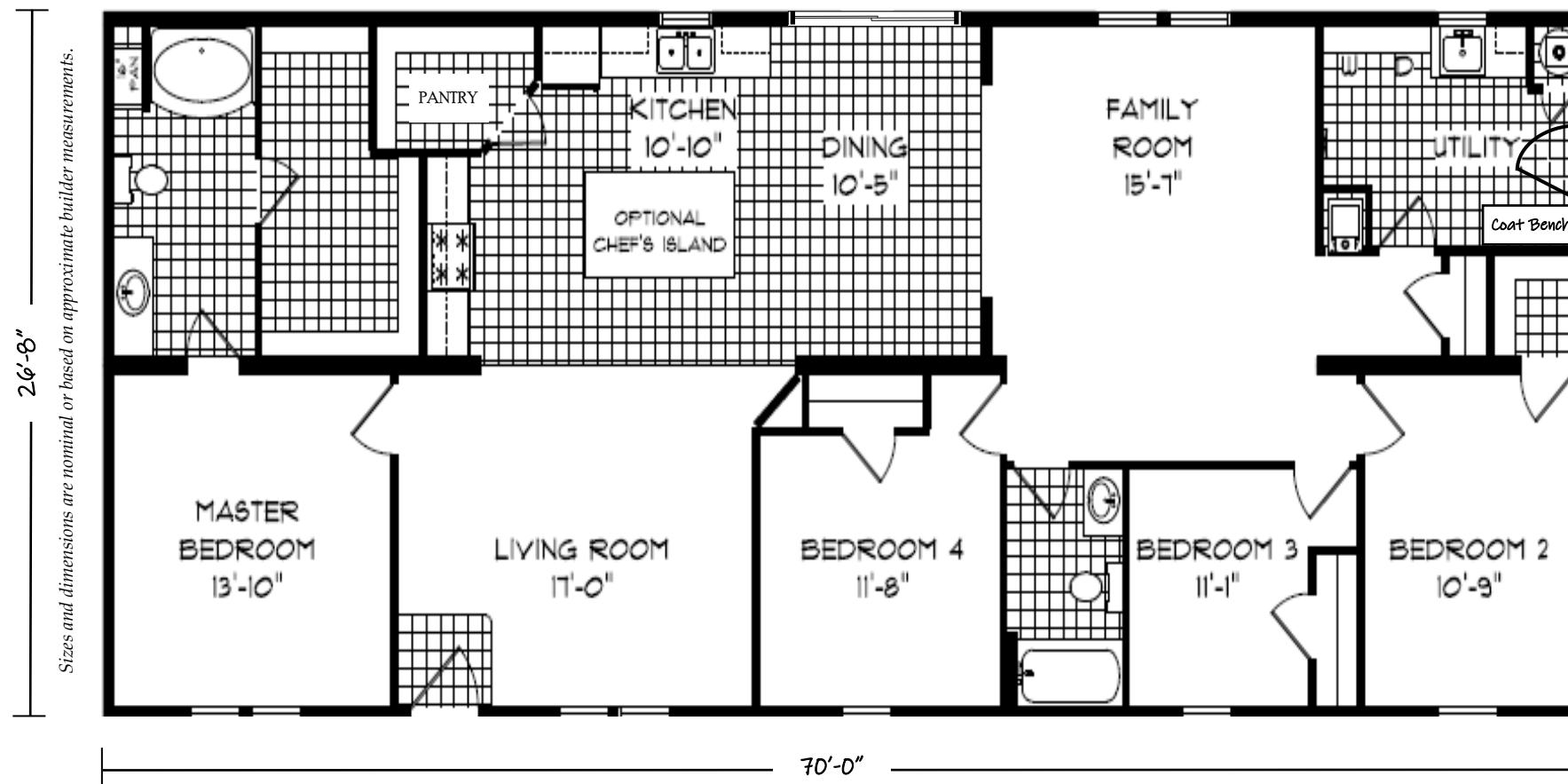
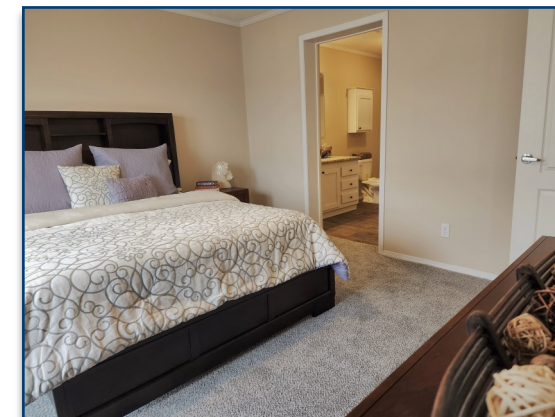


The modifications made to the standard floorplan are meant to showcase the upgrades available, as well as, the ability to customize floorplans to meet your lifestyle!

*Please contact us for detailed information including the price, on this or any of our display homes.*



1,867 Square Feet · 4 Bedroom / 2 Bath · 28' x 70' - 74'

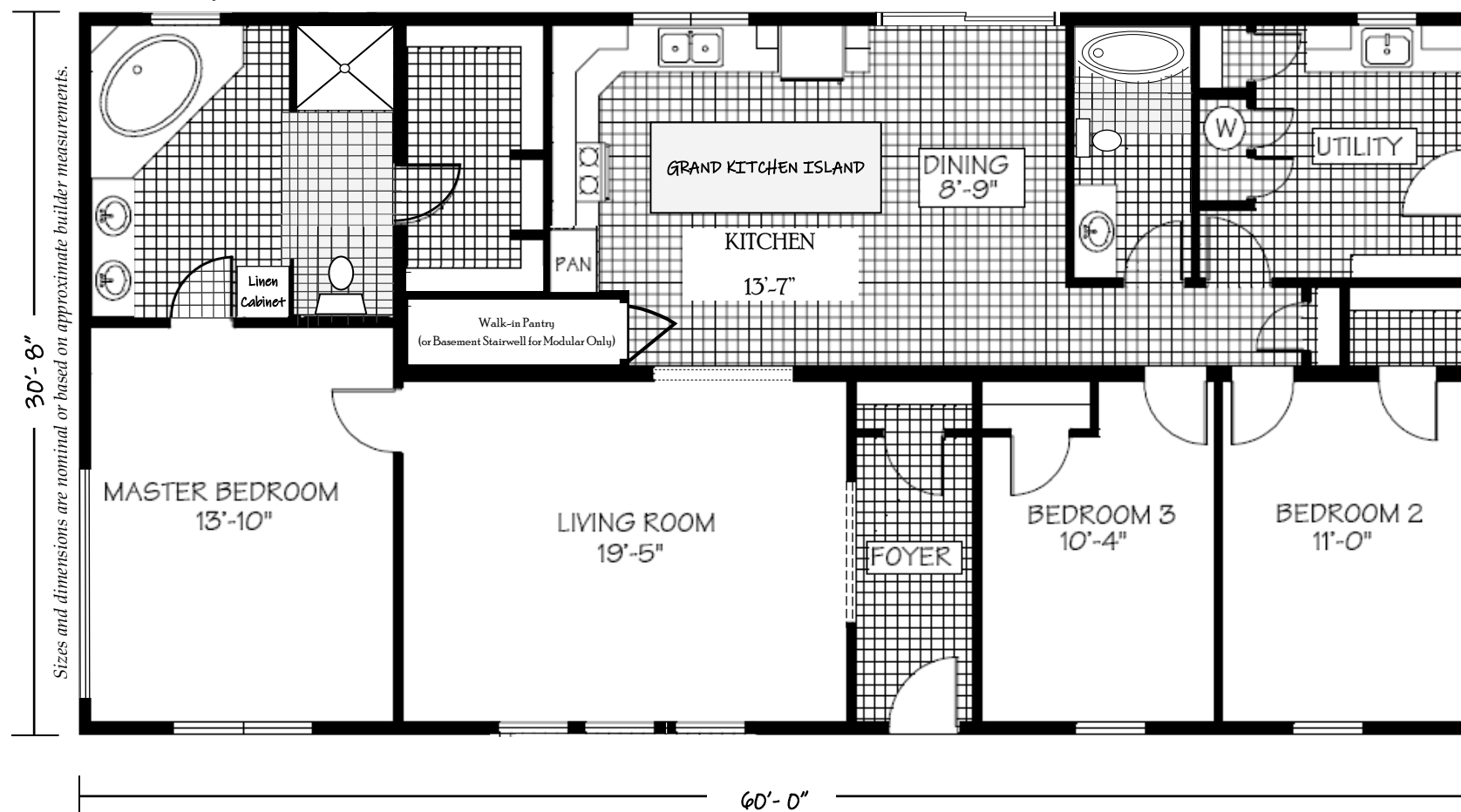


*Please contact us for detailed information including the price, on this or any of our display homes.*



Willow Forest - Modular Construction (Illinois State Code)

1,840 Square Feet · 3 Bedroom / 2 Bath · 32' x 60'



Love the floorplan - but maybe it's too big or maybe too small...

Floorplans similar to **The Willow Forest** are available in different sizes and can be built to meet either Modular Construction (State Code) or Manufactured Construction (National HUD Code)

The specific floorplan in our model home **#582** (as shown above) is based on the standard floorplan for **The Willow Forest** offered by MHE Inc.

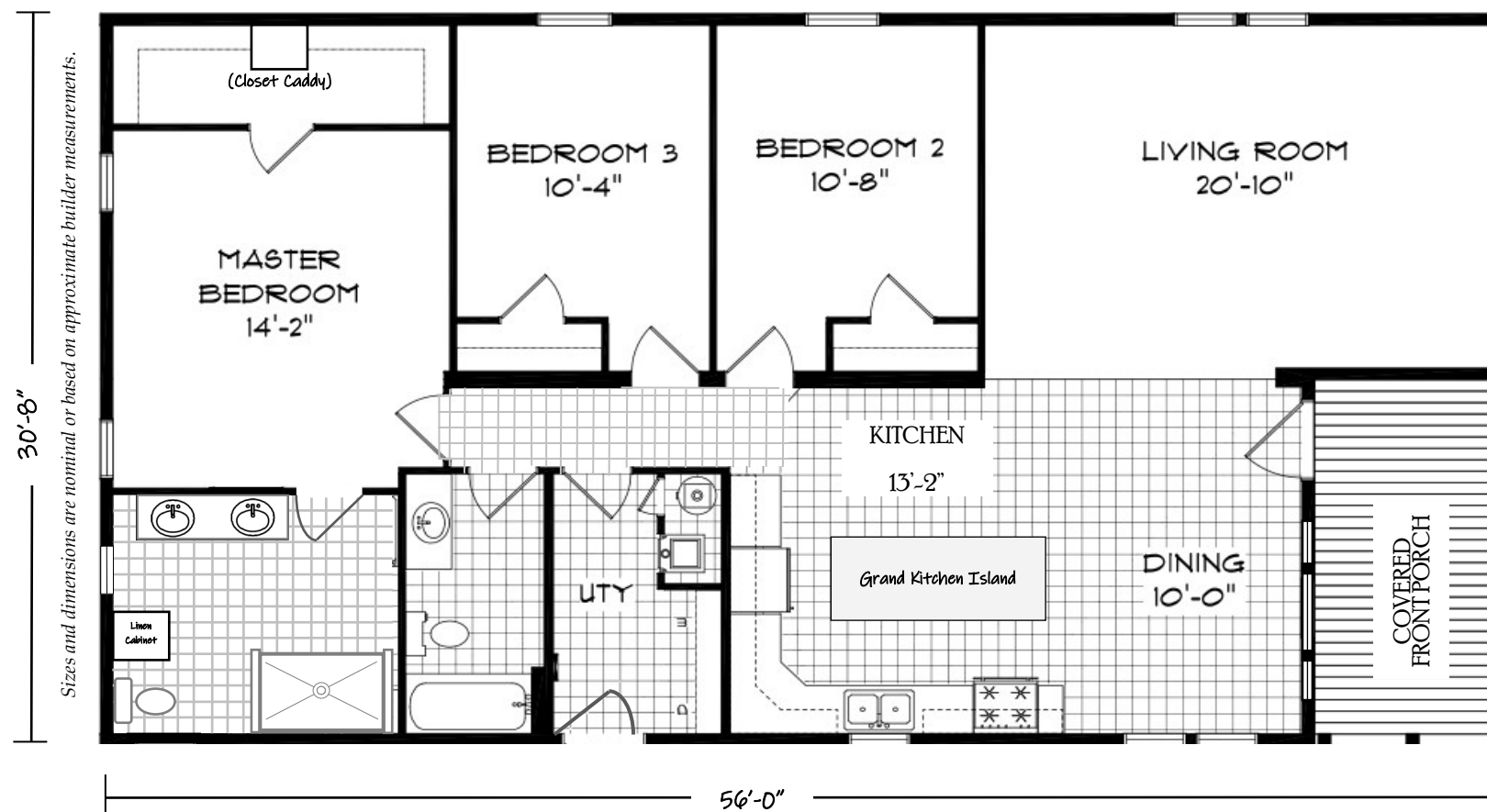


The modifications made to the standard floorplan are meant to showcase the upgrades available, as well as, the ability to customize floorplans to meet your lifestyle!

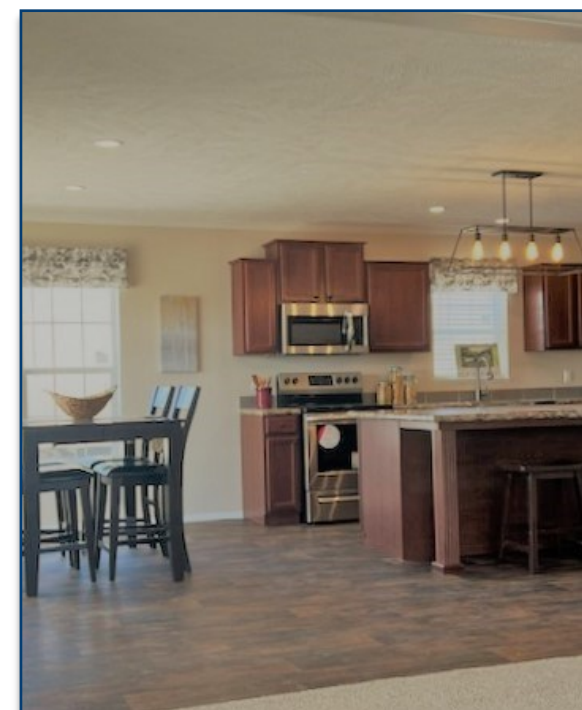
*Please contact us for detailed information including the price, on this or any of our display homes.*



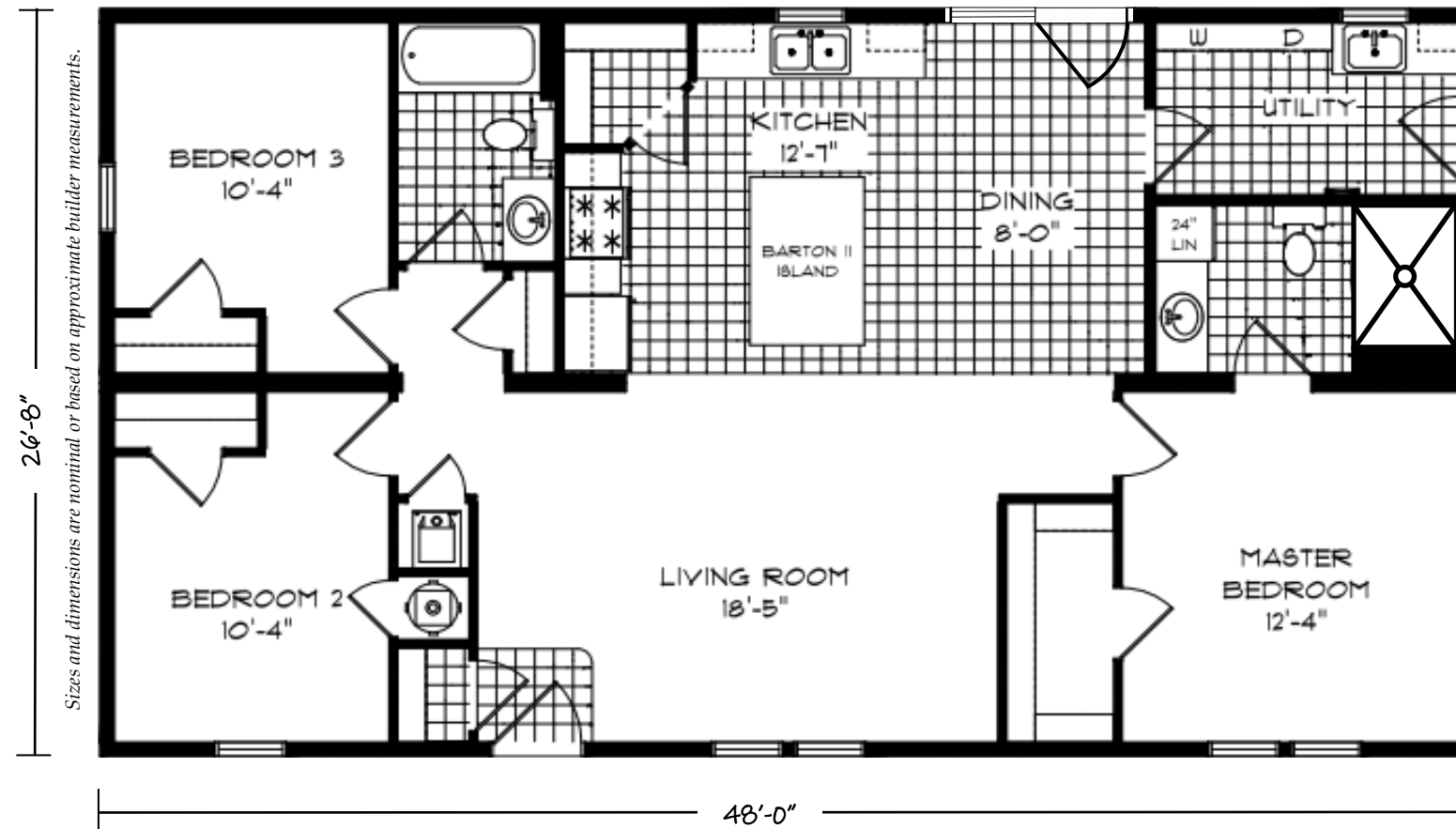
1,718 Square Feet · 3 Bedroom / 2 Bath · 32' x 56' - 60'



*Please contact us for detailed information including the price, on this or any of our display homes.*



1,280 Square Feet · 3 Bedroom / 2 Bath · 28 x 48'



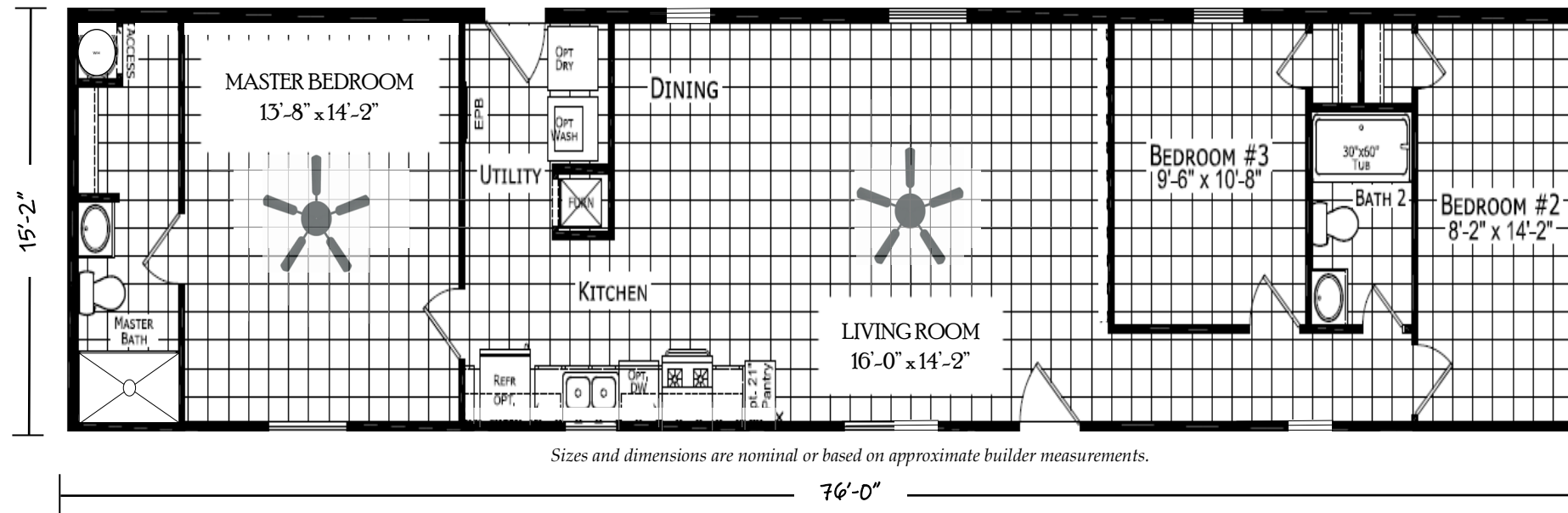
The specific floorplan in our model home **#565** (as shown above) is based on the standard floorplan for **The Barton Forest II** offered by MHE Inc.



*Please contact us for detailed information including the price, on this or any of our display homes.*



1,152 Square Feet · 3 Bedroom / 2 Bath · 16' x 76' - 80'

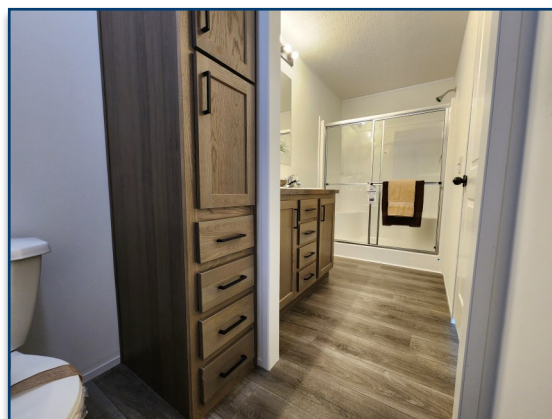
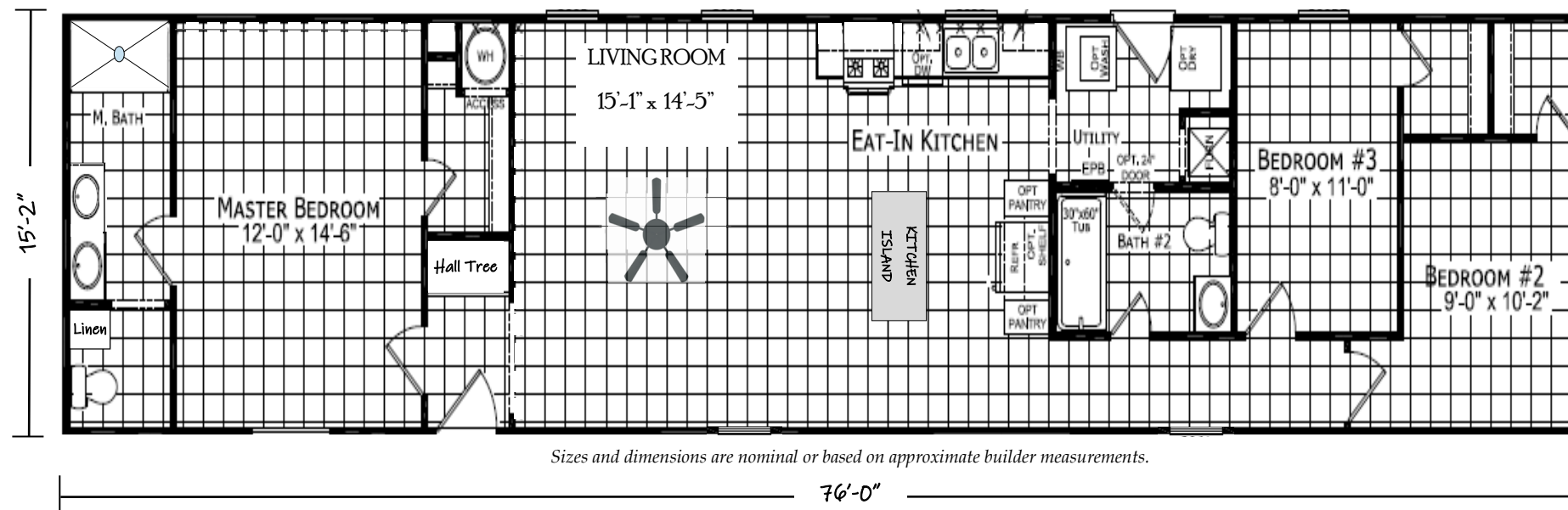


<ul style="list-style-type: none"> <li>• Delivery within 100 miles</li> <li>• Setup, Level &amp; Anchor</li> <li>• Central Air Conditioning</li> <li>• White Vinyl Perimeter Skirting</li> <li>• Federal HUD Installation Inspection</li> <li>• White Vinyl Siding</li> <li>• Black Shutters</li> <li>• Residential Craftsman Front Door</li> <li>• Black Shingle Roof</li> <li>• DRYWALL Throughout with Primer</li> </ul>	<ul style="list-style-type: none"> <li>• 2"x 6" Sidewalls</li> <li>• Spacious Shower in Master Bath</li> <li>• Thermal Zone 3 Insulation (28-19-11)</li> <li>• Low E Vinyl Gridded Windows</li> <li>• Electric Furnace &amp; 30 Gallon Electric Water Heater</li> <li>• 200 Amp Electric Panel Box</li> <li>• Backsplash Throughout</li> <li>• Black Deluxe 4 Piece Kitchen Appliance Package</li> <li>• Hardwood Cabinets w/Concealed Door Hinges, Deluxe Drawer Guides &amp; Center Shelves in Base Cabinets</li> <li>• Extended Warranty</li> </ul>	
---	--	---

*Please contact us for detailed information including the price, on this or any of our display homes.*



1,152 Square Feet · 3 Bedroom / 2 Bath · 16' x 76' - 80'



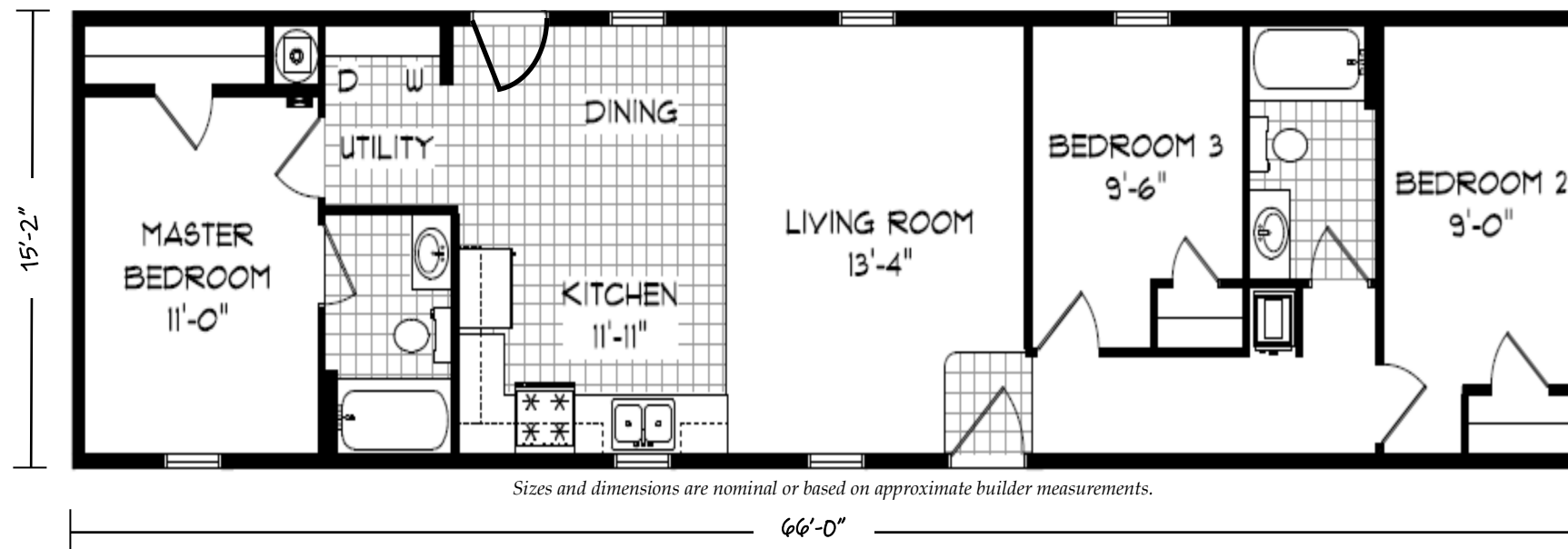
<ul style="list-style-type: none"> <li>• Delivery within 100 miles</li> <li>• Setup, Level &amp; Anchor</li> <li>• Central Air Conditioning</li> <li>• White Vinyl Perimeter Skirting</li> <li>• Federal HUD Installation Inspection</li> <li>• Clay Colored Vinyl Siding</li> <li>• Wine Colored Shutters</li> <li>• Residential Craftsman Front Door</li> <li>• Shingle Roof in Weatherwood Color</li> <li>• DRYWALL Throughout with Primer</li> </ul>	<ul style="list-style-type: none"> <li>• 2"x 6" Sidewalls</li> <li>• Spacious Shower in Master Bath</li> <li>• Thermal Zone 3 Insulation (28-19-11)</li> <li>• Low E Vinyl Gridded Windows</li> <li>• Electric Furnace &amp; 30 Gallon Electric Water Heater</li> <li>• 200 Amp Electric Panel Box</li> <li>• Backsplash Throughout</li> <li>• Black Deluxe 4 Piece Kitchen Appliance Package</li> <li>• <i>Hardwood Cabinets w/Concealed Door Hinges, Deluxe Drawer Guides &amp; Center Shelves in Base Cabinets</i></li> <li>• Extended Warranty</li> </ul>	
--	---	---



*Please contact us for detailed information including the price, on this or any of our display homes.*

Single Section - Manufactured Construction (National HUD Code)

1,012 Square Feet · 3 Bedroom / 2 Bath · 16' x 66' - 70'



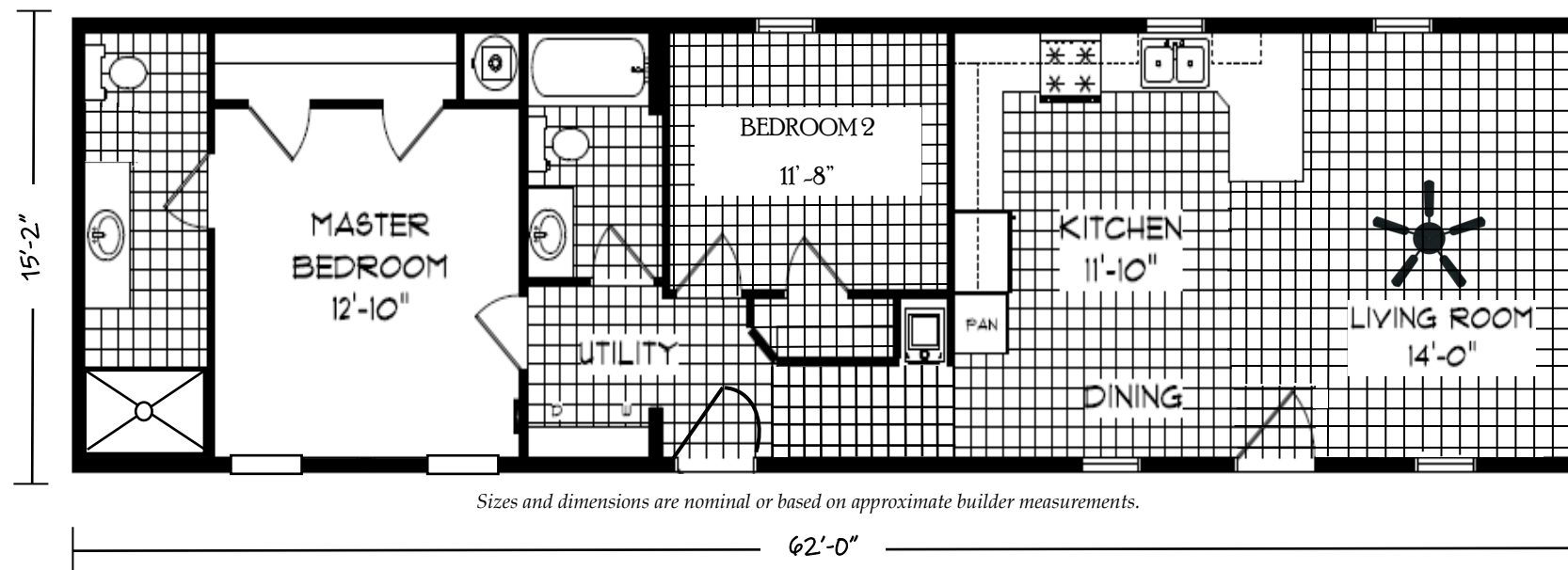
**Features included but not limited to:**

- Delivery within 100 miles
  - Setup, Level & Anchor
  - Central Air Conditioning
  - White Vinyl Perimeter Skirting
  - Federal HUD Installation Inspection
  - Pebble Clay Vinyl Siding
  - Shingle Roof in Teak
  - White Vinyl Window Trim on Front & Hitch End
  - 36" Steel Front Door with Storm Door
  - 2"x 6" Sidewalls
  - Thermal Zone 3 Insulation (30-19-11)
  - Double Pane Windows
  - Electric Furnace & 30 Gallon Electric Water Heater
  - Whole House Water Shut-Off Valve
  - Black Deluxe 3 Piece Kitchen Appliance Package
  - Spacious Shower in Master Bath with Transom Window
  - Durable Linoleum throughout common spaces and carpet in bedrooms
  - *Oak Stained Hardwood Cabinets w/Concealed Door Hinges*



*Please contact us for detailed information including the price, on this or any of our display homes.*

955 Square Feet · 2 Bedroom / 2 Bath · 16' x 62' - 66'



**Features included but not limited to:**

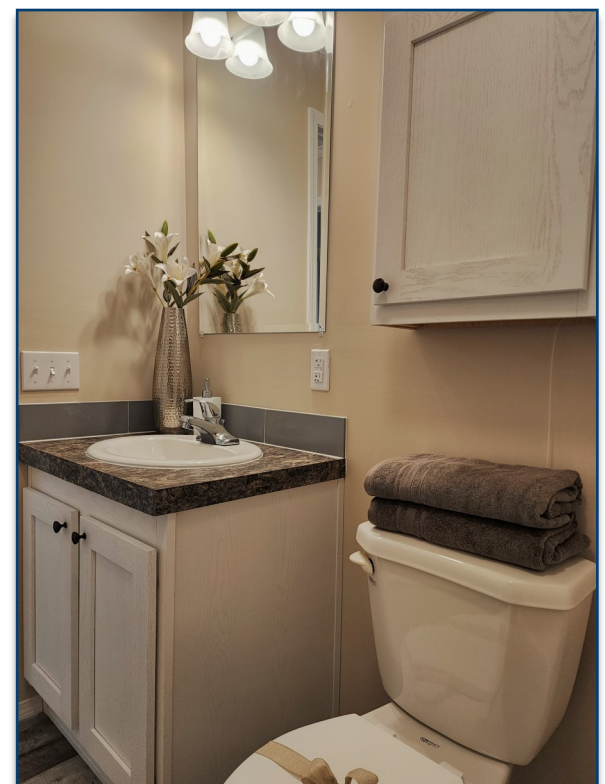
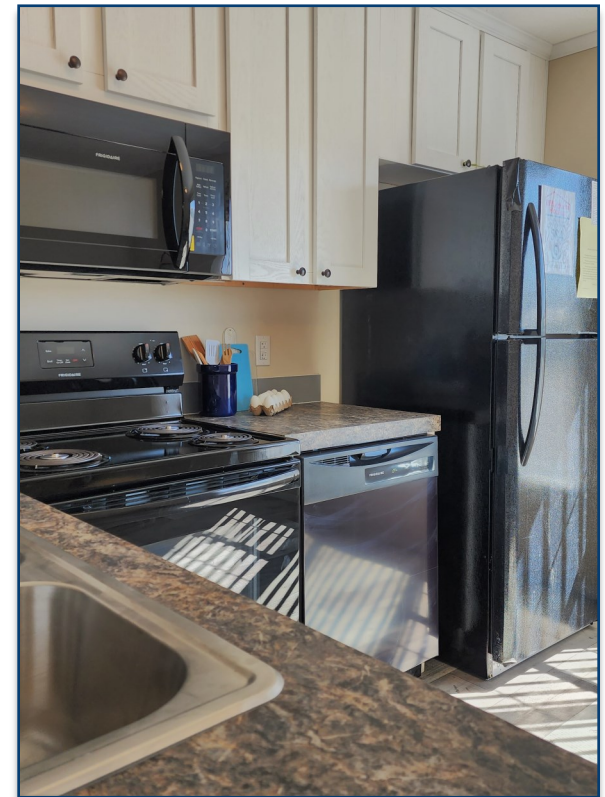
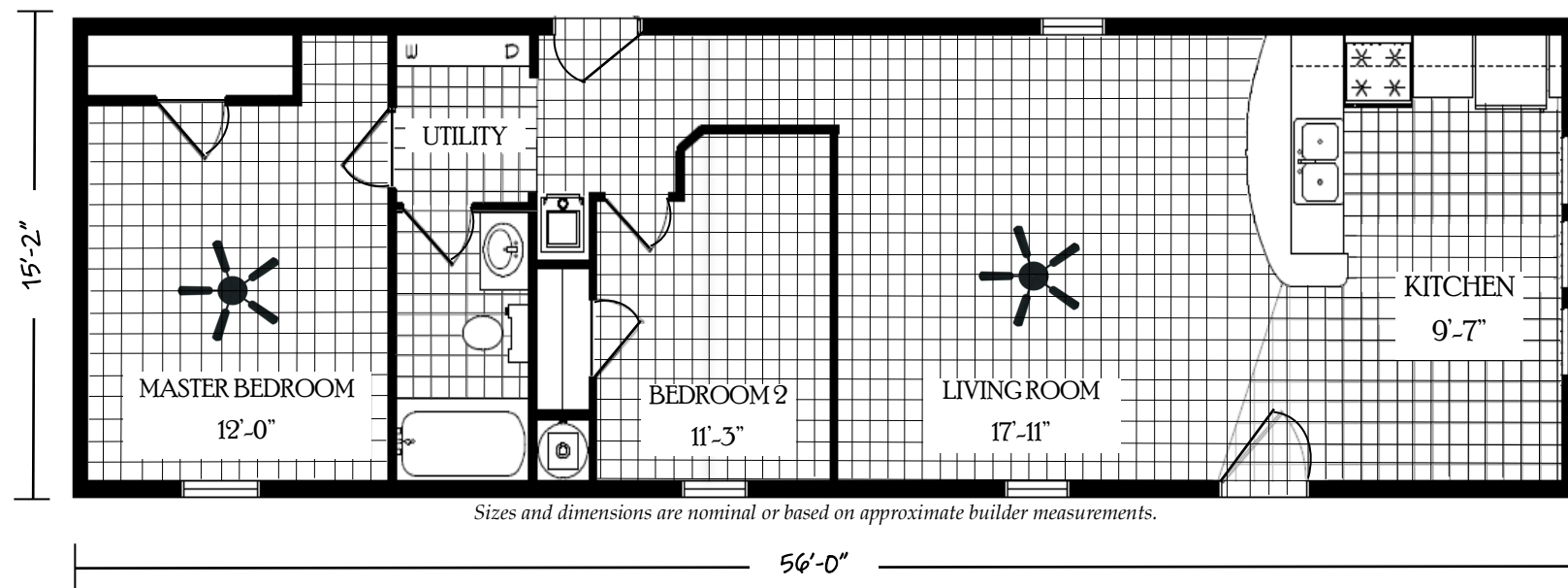
- Delivery within 100 miles
  - Setup, Level & Anchor
  - Central Air Conditioning
  - White Vinyl Perimeter Skirting
  - Federal HUD Installation Inspection
  - Clay Colored Vinyl Siding
  - Green Colored Shutters
  - 36" Steel Front Door with Storm Door
  - Onyx Black Shingle Roof
  - DRYWALL Throughout with Primer
  - 2"x 6" Sidewalls
  - Spacious Shower in Master Bath
  - Thermal Zone 3 Insulation (30-19-11)
  - Double Pane Windows
  - Electric Furnace
  - 40 Gallon Electric Water Heater
  - 200 Amp Electric Panel Box
  - Ceramic Backsplash Throughout
  - Black Deluxe 4 Piece Kitchen Appliance Package
  - *Oak Stained Hardwood Cabinets w/Concealed Door Hinges*



*Please contact us for detailed information including the price, on this or any of our display homes.*

Single Section - Manufactured Construction (National HUD Code)

859 Square Feet · 2bBedroom / 1 Bath · 16' x 56' - 60'



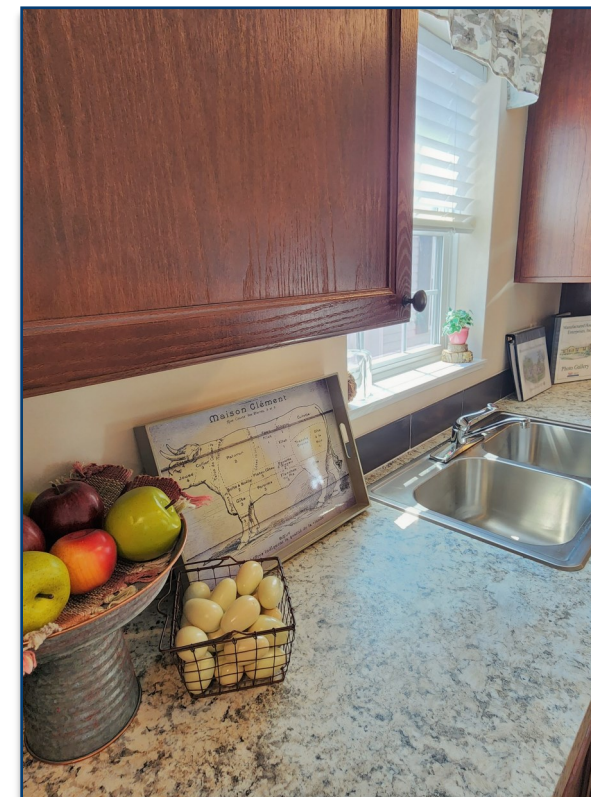
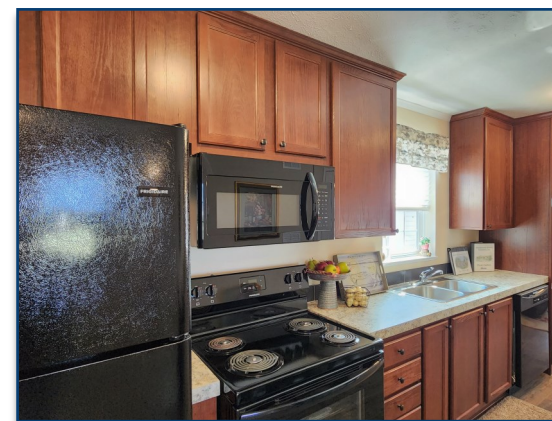
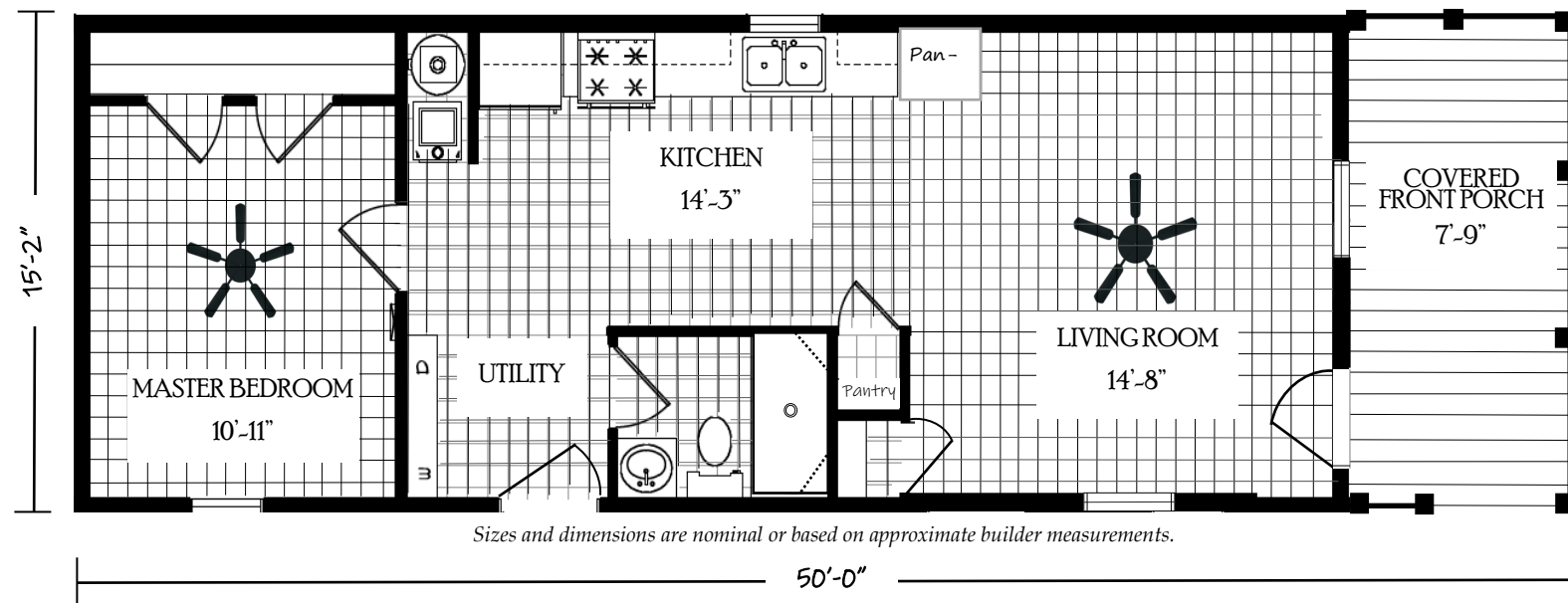
**Features included but not limited to:**

- Delivery within 100 miles
  - Setup, Level & Anchor
  - Central Air Conditioning
  - White Vinyl Perimeter Skirting
  - Federal HUD Installation Inspection
  - Grey Vinyl Siding
  - White Shutters
  - 6 Panel Residential Front Door
  - 9 Lite Residential Rear Door
  - Onyx Black 25 Year Shingle Roof
  - DRYWALL Throughout with Primer
  - 2"x 6" Sidewalls
  - White Contoured Interior Trim
  - Thermal Zone 3 Insulation (30-19-11)
  - Double Pane Windows
  - Electric Furnace & 40 Gallon Electric Water Heater
  - 200 Amp Electric Panel Box
  - Backsplash Throughout
  - Black Deluxe 4 Piece Kitchen Appliance Package
  - *White Hardwood Cabinets w/42" Overheads and Concealed Door Hinges*



*Please contact us for detailed information including the price, on this or any of our display homes.*

647 Square Feet · 1 Bedroom / 1 Bath · 16' x 50' - 54'



**Features included but not limited to:**

- Delivery within 100 miles
  - Setup, Level & Anchor
  - Central Air Conditioning
  - White Vinyl Perimeter Skirting
  - Federal HUD Installation Inspection
  - Heritage Red Vinyl Siding
  - White Exterior Vinyl Lineal Trim on Windows
  - 6 Panel Residential Front Door
  - 9 Lite Residential Rear Door
  - Onyx Black Shingle Roof
  - DRYWALL Throughout with Primer
  - 2"x 6" Sidewalls
  - Thermal Zone 3 Insulation (30-19-11)
  - Double Pane Low E Vinyl Gridded Windows
  - Electric Furnace & 40 Gallon Electric Water Heater
  - 200 Amp Electric Panel Box
  - Ceramic Backsplash Throughout
  - 30X60 Shower Only in Bathroom
  - Black Deluxe 4 Piece Kitchen Appliance Package
  - *Hardwood Cabinets Stained Cherry w/Concealed Door Hinges and 42" Overheads*



*Please contact us for detailed information including the price, on this or any of our display homes.*