

PRINTABLE BROCHURE

Explore our current display homes—thoughtfully arranged from largest to smallest—to help you easily compare layouts, space, and design. Featuring the floorplan, photos and details for each of our model homes.

Every floor plan you see is just the starting point.

With **A Better Way To Build**, customization comes naturally:

- Move walls, doors, or windows
- Reimagine spaces—like transforming a bedroom into a dream pantry
- Invert or mirror layouts to fit your homesite perfectly
- Expand or reduce square footage to match your lifestyle

Found a layout you love, but need a little more room?
Let's stretch it.

Looking to simplify or scale back?
We can do that too.

Because the right floor plan isn't just about what's on paper—it's about creating a home that fits *you*.

We recommend **PRINTING** this **BROCHURE** before you visit—it's the perfect companion for your private or guided tour, with a dedicated section to jot down your ideas and questions as you walk through!

MODEL HOMES ARE AVAILABLE FOR TOURS
MONDAY - FRIDAY 9am - 4pm & SATURDAY 9 - 2

If for some reason our hours are not convenient and you need to schedule a private tour please call or email us and we will be happy to accommodate you!

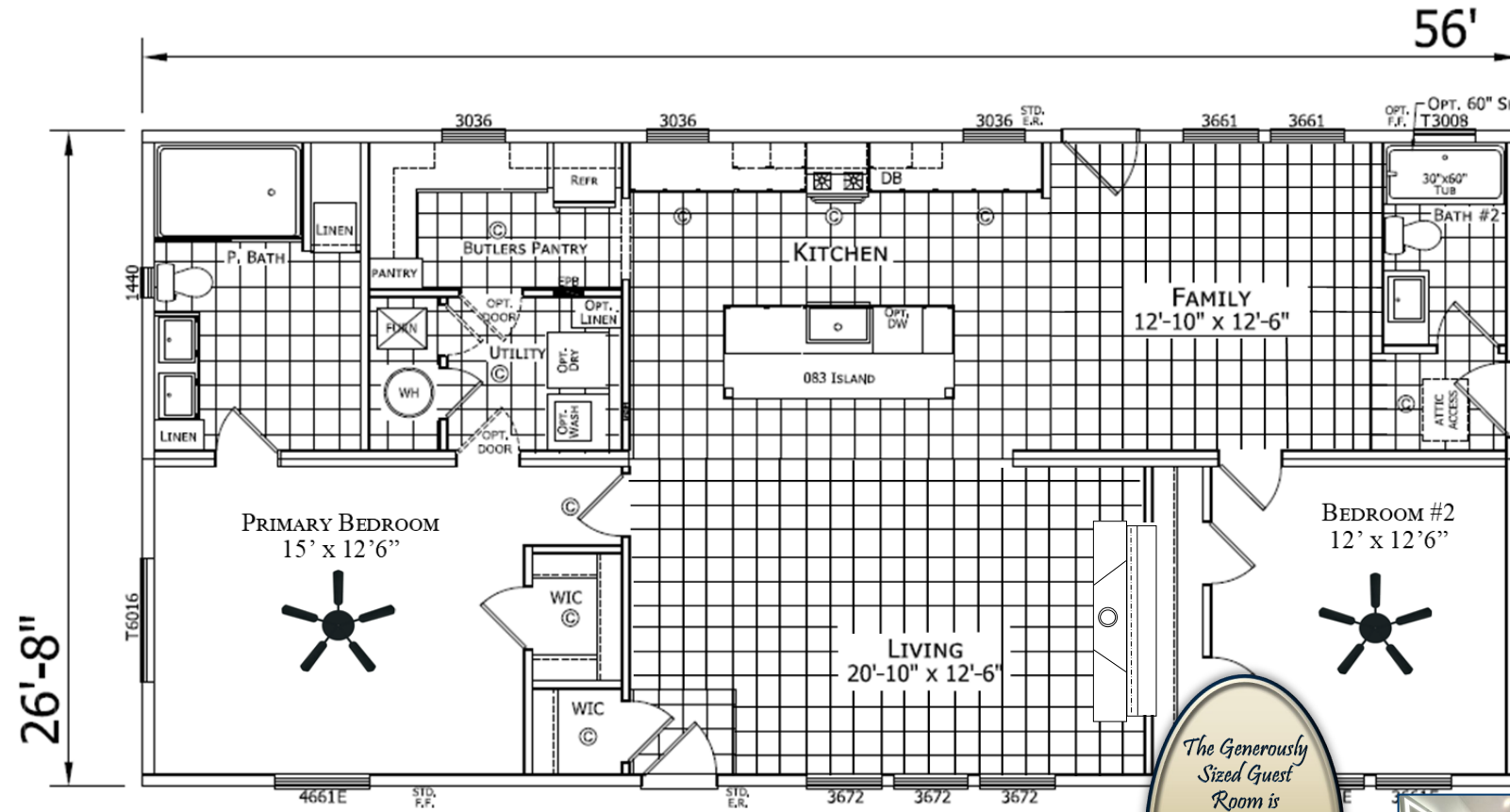


Display Home 623 - Built by Champion Homes (Dutch Housing)

The Belvidere - Modular Construction (Illinois State Code)

1,493 Square Feet · 2 Bedroom / 2 Bath · 28' x 56'

NOTES:



9' Ceilings, Transom Windows and the Stunning 1/2 Stone Fireplace come together creating a space YOU WANT TO LIVE IN!



It's in the Details... Gorgeous Tile Stunning Millwork & Curated Finishes all come together to create this modern yet cozy home!

The Ultimate in Open Concept Kitchen, Living and Dining Space with the added bonus of a Butler's Pantry!

The Generously Sized Guest Room is Conveniently located across the hall from the Well Appointed Guest Bath

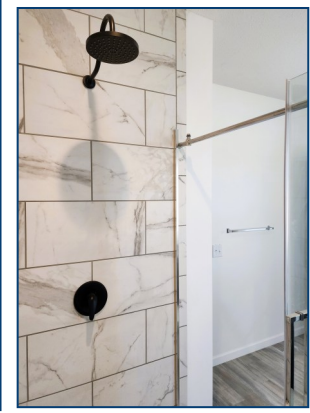
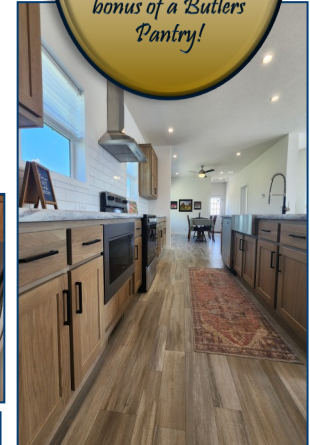
Love the floorplan - but maybe it's too big or maybe too small... Floorplans similar to **The Belvidere** are available in different sizes & can be built to meet either Modular Construction (State Code) or Manufactured Construction (National HUD Code)

The specific floorplan in our model home #623 (as shown above) is based on the standard floorplan for **The Belvidere** offered by Champion Homes/Dutch Housing



The modifications made to the standard floorplan are meant to showcase the upgrades available, as well as, the ability to customize floorplans to meet your lifestyle!

Please contact us for detailed information including the price, on this or any of our display homes.



Large Master Retreat includes a Spa-Inspired Master Bathroom

Display Home 627 - Built by Cavco Goshen, aka Commodore Homes of Indiana
 The Essence 1 - Modular Construction (Illinois State Code)
 1,387 Square Feet · 3 Bedroom / 2 Bath · 28' x 52'



NOTES:
 When you hear the saying "good things come in small packages," think of our latest gem: The Essence 1, masterfully crafted by Commodore Homes of Indiana! We've adorned the exterior of this model home to hint at the delightful surprises that await within.

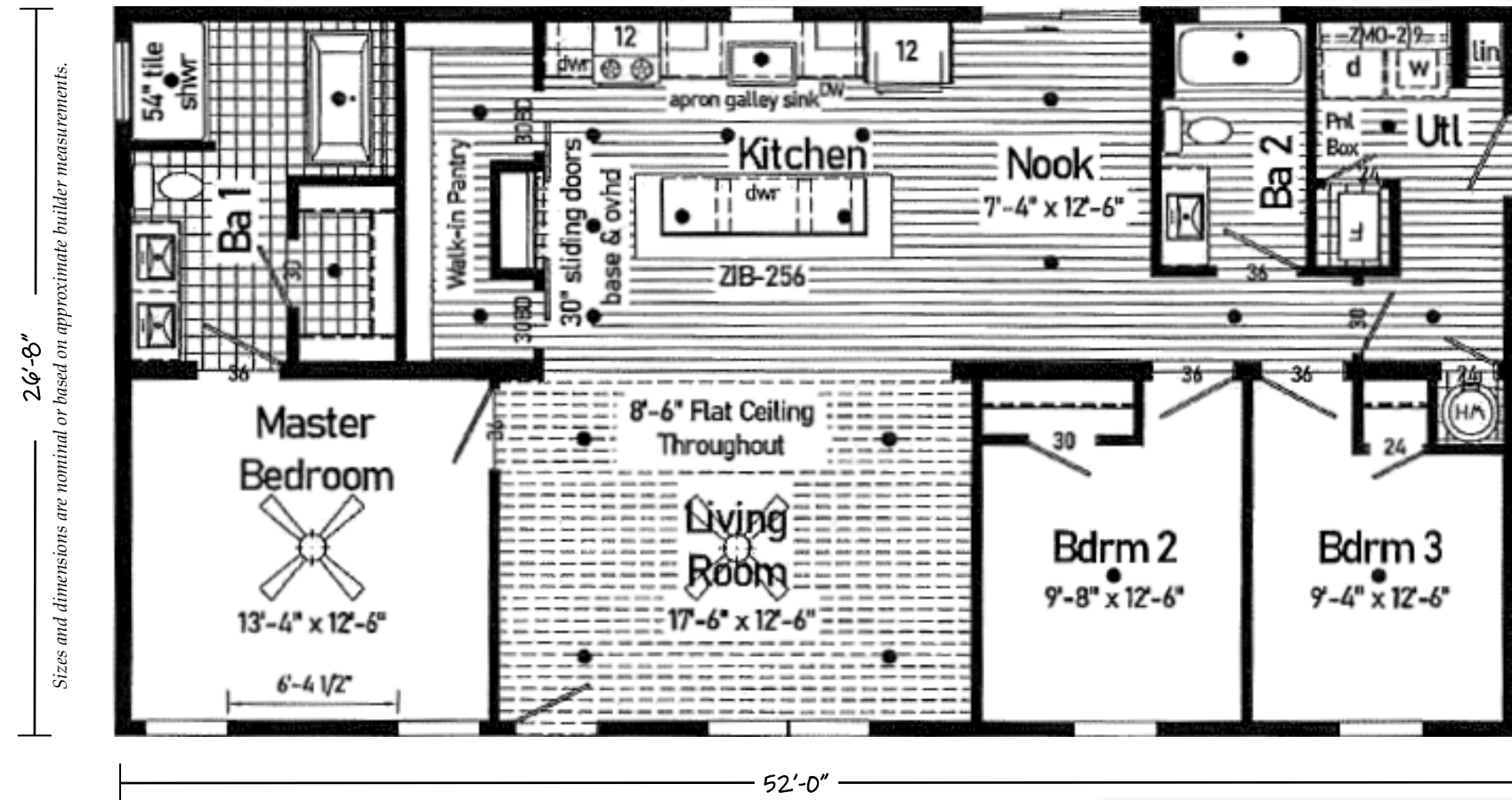
Step inside, and you'll be greeted by an expansive open-concept living area that blends style and functionality seamlessly. Here, a Gourmet Kitchen beckons with its stunning fully tiled mosaic backsplash and a dreamy pantry just waiting to store your culinary treasures. The Luxury Vinyl Plank Flooring glistens under the 8 1/2 foot ceilings, making every corner of this space feel airy and inviting!

Venture further, and you'll discover the private quarters, where generous guest rooms promise comfort and tranquility.

The master suite, however, is nothing short of a sanctuary! It's bathroom could easily trend on social media, showcasing a free-standing tub that invites relaxation, and a tiled walk-in shower that flaunts both rain head and handheld faucets. The double vanity, adorned with elegant matte black hardware and stunning waterfall faucets, adds a touch of sophistication that's sure to impress.

Can you believe all of this luxury is encapsulated in just under 1400 square feet?

There's so much more to uncover in our display home. Come visit us today and let the Essence 1 capture your heart!



We all want our homes to feel welcoming & beautiful; not just on the inside but the outside as well! This AI-generated photo invites you to envision how this home would integrate beautifully within an existing property. It showcases the transformative power of landscaping, where simple yet impactful choices—such as strategically placed plants & thoughtfully designed pathways—can elevate your home's aesthetic appeal. Let this image inspire you to enhance your outdoor space. With creativity & planning, you can create a welcoming environment that truly complements your home's architecture and personality both inside & out!

Love the floorplan - but maybe it's too big or maybe too small...
 Floorplans similar to **The Essence 1** are available in different sizes and can be built to meet either Modular Construction (State Code) or Manufactured Construction (National HUD Code)

The specific floorplan in our model home #627 (as shown above) is based on the standard floorplan for **The Essence 1** offered by Cavco Goshen; aka Commodore Homes of Indiana .

The modifications made to the standard floorplan are meant to showcase the upgrades available, as well as, the ability to customize floorplans to meet your lifestyle!

Please contact us for detailed information including the price, on this or any of our display homes.

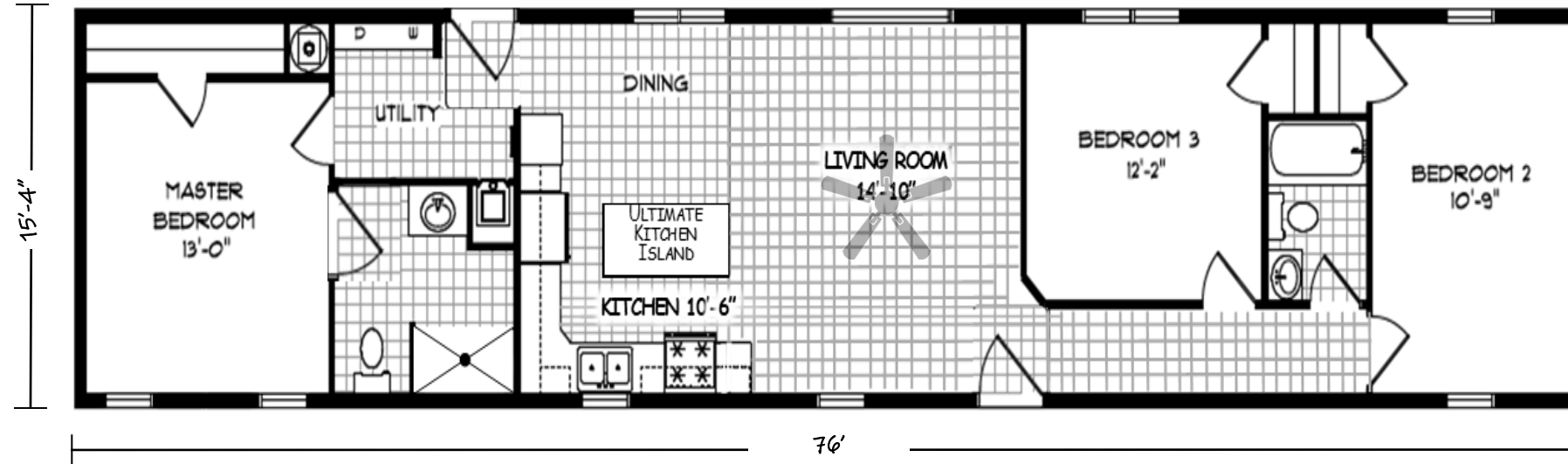


NOTES:

Display Home 641 - Built by MHE Inc.

Single Section - Manufactured Construction (National HUD Code)

1,152 Square Feet · 3 Bedroom / 2 Bath · 16' x 76' - 80'



Features included but not limited to:

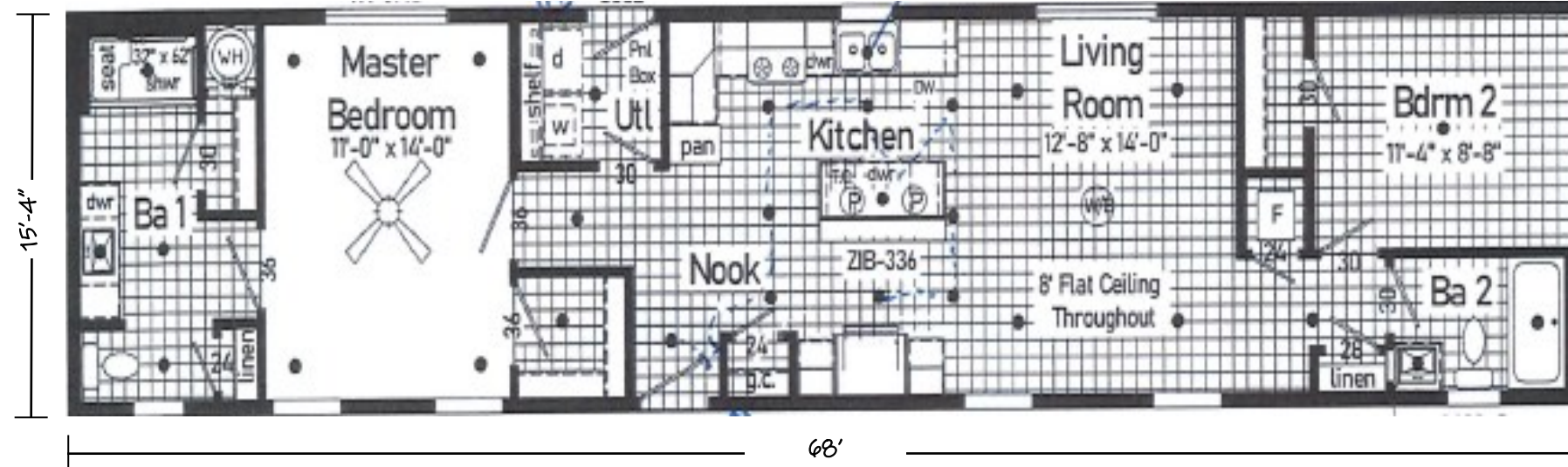
- Delivery within 100 miles
- Setup, Level & Anchor
- Central Air Conditioning
- White Vinyl Perimeter Skirting
- Federal HUD Installation Inspection
- Pebble Clay Vinyl Siding
- Brown Shutters on Windows
- 9 Lite Residential Front & Rear Doors
- Driftwood Architectural Shingle Roof
- LED Lighting Throughout Main Living Spaces
- Smooth, Primed DRYWALL (Ready for Paint) Throughout
- 2"x 6" Sidewalls
- Thermal Zone 3 Insulation (30-19-11)
- Double Pane Low E Vinyl Gridded Windows
- Electric Furnace & 40 Gallon Electric Water Heater
- 200 Amp Electric Panel Box
- Single Row Subway Tile Backsplash Throughout
- 30X60 Shower Only in Master Bathroom
- Black Deluxe 4 Piece Kitchen Appliance Package
- *Cherry Colored Hardwood Cabinets w/Concealed Door Hinges and 42" Overheads*



Please contact us for detailed information including the price, on this or any of our display homes.

NOTES:

Display Home 640 - Built by Cavco Goshen aka Commodore Homes of Indiana
Single Section - Manufactured Construction (National HUD Code)
1,020 Square Feet · 2 Bedroom / 2 Bath · 16' x 68' - 72'

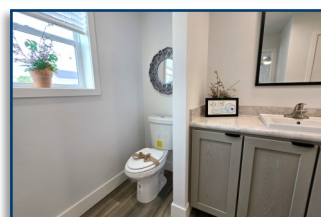


Features included but not limited to:

- Delivery within 100 miles
- Setup, Level & Anchor
- Central Air Conditioning
- White Vinyl Perimeter Skirting
- Federal HUD Installation Inspection
- Gray Colored Vinyl Siding
- Estate Gray Architectural Shingle Roof
- White Window Shutters
- 1/2 Lite w/Internal Blind Front & Rear Doors
- LED Lighting Throughout
- Smooth, Primed DRYWALL (Ready for Paint) Throughout
- 2"x 6" Sidewalls
- Thermal Zone 3 Insulation (38-21-11)
- Electric Furnace & 40 Gallon Electric Water Heater
- 200 Amp Electric Panel Box
- Full Wall Tile Backsplash in Kitchen
- Low Barrier Walk-In Shower in the Master Bath
- Black 3 Piece Kitchen Appliance Package
- Latte Oak Colored Hardwood Cabinets w/Concealed Door Hinges and 42" Overheads
- Soft Close Doors and Drawers

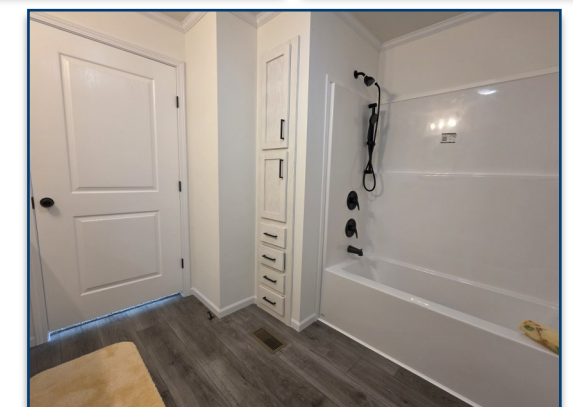
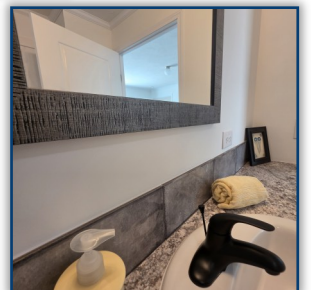
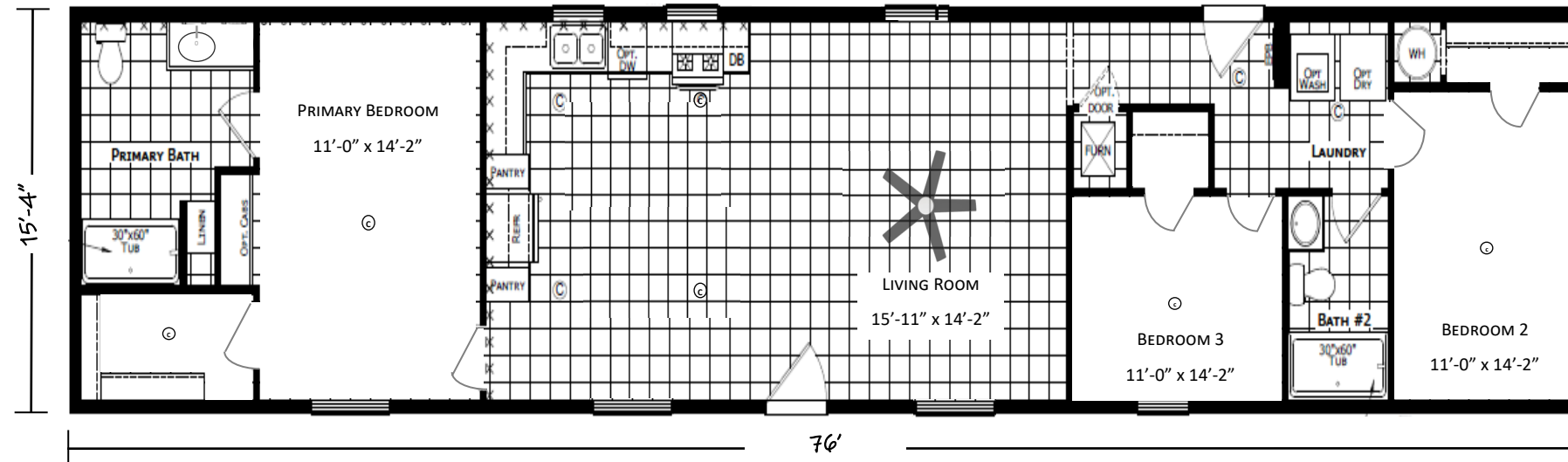


Please contact us for detailed information including the price, on this or any of our display homes.



NOTES:

Display Home 642 - Built by Champion Homes (Dutch Housing)
Single Section - Manufactured Construction (National HUD Code)
1,152 Square Feet · 3 Bedroom / 2 Bath · 16' x 76' - 80'



Features included but not limited to:

- Delivery within 100 miles
- Setup, Level & Anchor
- Central Air Conditioning
- White Vinyl Perimeter Skirting
- Federal HUD Installation Inspection
- Gray Colored Vinyl Siding
- Estate Gray Architectural Shingle Roof
- White Window Shutters
- 1/2 Lite w/Internal Blind Front & Rear Doors
- LED Lighting Throughout
- Smooth, Primed DRYWALL (Ready for Paint) Throughout
- 2"x 6" Sidewalls
- Thermal Zone 3 Insulation (38-21-11)
- Electric Furnace & 40 Gallon Electric Water Heater
- 200 Amp Electric Panel Box
- Full Wall Tile Backsplash in Kitchen
- Low Barrier Walk-In Shower in the Master Bath
- Black 3 Piece Kitchen Appliance Package
- Latte Oak Colored Hardwood Cabinets w/Concealed Door Hinges and 42" Overheads
- Soft Close Doors and Drawers



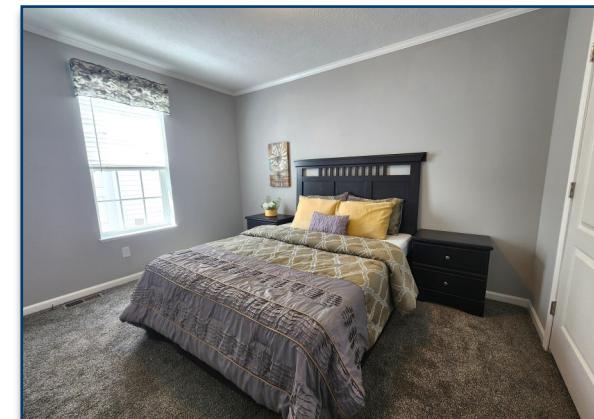
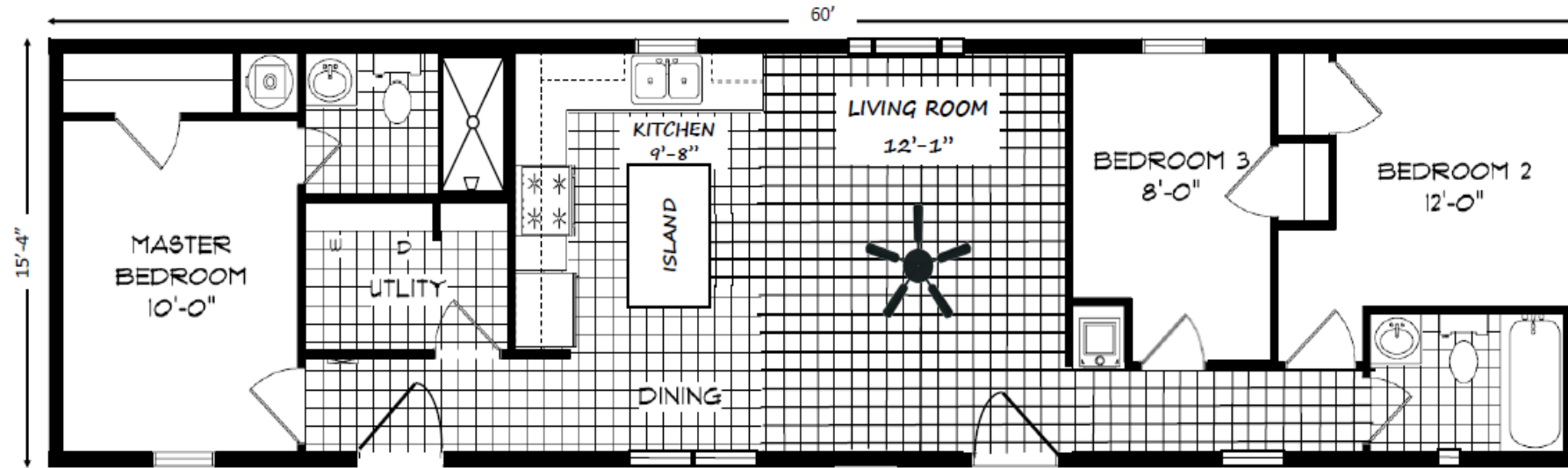
Please contact us for detailed information including the price, on this or any of our display homes.

NOTES:

Display Home 621 - Built by MHE Inc.

Single Section - Manufactured Construction (National HUD Code)

924 Square Feet Inside · 3 Bedroom / 2 Bath · 16' x 60' - 64'



Features included but not limited to:

- Delivery within 100 miles
- Setup, Level & Anchor
- Central Air Conditioning
- White Vinyl Perimeter Skirting
- Federal HUD Installation Inspection
- Mountain Pine (Dark Green) Vinyl Siding
- Onyx Black Shingle Roof & Black Shutters
- 6-Panel Residential Front Door
- 9-Lite Residential Rear Door
- Smooth, Primed DRYWALL (Ready for Paint) Throughout
- 2 X 6 Sidewalls
- Thermal Zone 3 Insulation (30-19-11)
- Double Pane Low E Vinyl Gridded Windows
- Electric Furnace & 40 Gallon Electric Water Heater
- 200 Amp Electric Panel Box
- Single Row White Subway Tile Backsplash Throughout
- Walk-In 30X60 Shower in Master Bathroom
- Black Deluxe 3 Piece Kitchen Appliance Package
- *White Hardwood Cabinets w/Concealed Door Hinges and 42" Overheads*
- *LED Lighting in Kitchen & Dining*
- *White Wood Trim and Window Sills*
- *Separate Utility/Laundry Room*



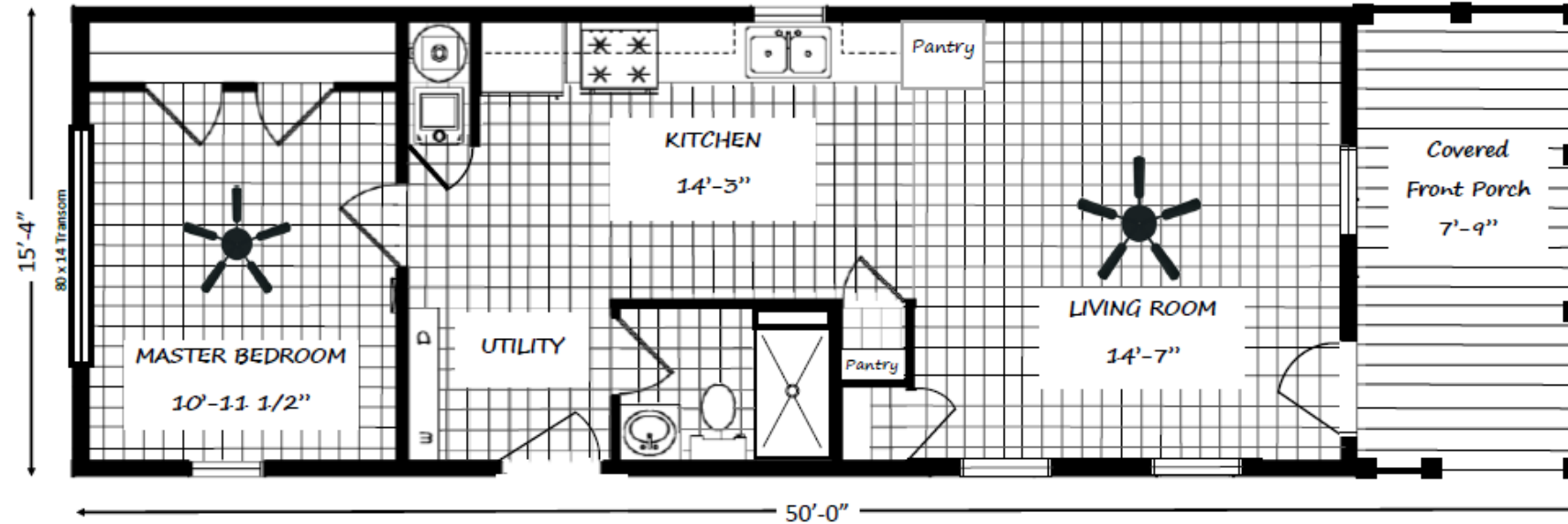
Please contact us for detailed information including the price, on this or any of our display homes.

NOTES:

Display Home 620 - Built by MHE Inc.

Single Section - Manufactured Construction (National HUD Code)

647 Square Feet Inside +122 Square Feet on the Front Porch · 1 Bedroom / 1 Bath · 16' x 50'



Buy Now
OR

Design Your Dream Home Today!



Beautiful & Efficient Kitchen!

Features included but not limited to:

- Delivery within 100 miles
- Setup, Level & Anchor
- Central Air Conditioning
- White Vinyl Perimeter Skirting
- Federal HUD Installation Inspection
- Blue Ridge Vinyl Siding
- White Exterior Vinyl Lineal Trim on Windows
- 6 Panel Residential Front Door
- 9 Lite Residential Rear Door
- Estate Gray Architectural Shingle Roof
- Smooth, Primed DRYWALL (Ready for Paint) Throughout
- 2"x 6" Sidewalls
- Thermal Zone 3 Insulation (30-19-11)
- Double Pane Low E Vinyl Gridded Windows
- Electric Furnace & 40 Gallon Electric Water Heater
- 200 Amp Electric Panel Box
- Single Row White Subway Tile Backsplash Throughout
- 30X60 Shower Only in Bathroom
- White Deluxe 4 Piece Kitchen Appliance Package
- White Hardwood Cabinets w/Concealed Door Hinges and 42" Overheads



Please contact us for detailed information including the price, on this or any of our display homes.



Neutral & Modern Bathroom!



**Heckaman
Homes**

Effingham Homes
A BETTER WAY TO BUILD

MODEL HOMES ARE AVAILABLE FOR TOURS
MONDAY-FRIDAY 9am-4pm & SATURDAY 9-2

If for some reason our hours are not convenient and you need to schedule a private tour please call or email us and we will be happy to accommodate you!

Effingham Homes

A BETTER WAY TO BUILD

ROAD TRIP 2026

Tour both the Heckaman Homes factory on the 2nd Saturday of every month!

Tour the production facility so you can see the process up close.

Tour times are from 10am until 12pm EST, with the last tour starting at 11:30am.

While there, you can also visit three beautifully decorated model homes and the Heckaman Design Center with samples of available options.

Location:

Heckaman Homes

2676 E. Market Street
Nappanee, IN 46550

Factory Tour Times:

10am - 12pm EST (Last tour starts at 11:30)

Before Planning Your Road Trip ...

Please call Heckaman Homes to confirm Tour Dates and Times!



**Heckaman
Homes**

2026

OPEN HOUSE SCHEDULE

LOCATION: 2676 E. Market Street Nappanee, IN 46550

TOUR TIMES: 10am to 12pm E.S.T. (tours every half hour)

FEATURES: (3) Beautifully decorated models, a design center with samples & production facility tours (See tour times above)

DATES: **JANUARY 10TH**
FEBRUARY 14TH
MARCH 14TH
APRIL 11TH
MAY 9TH
JUNE 13TH

JULY 11TH
AUGUST 8TH
SEPTEMBER 12TH
OCTOBER 10TH
NOVEMBER 14TH
DECEMBER 12TH

WWW.HECKAMANHOMES.COM

Please Feel Free To Call Heckaman Homes M-F w/Any Questions (574) 773-4167

Normal Model Hours M-F 9am-4pm and Saturdays 10am-2pm (Except Holidays)