

Effingham Homes

A BETTER WAY TO BUILD

At Effingham Homes we believe that a house should be as unique as its inhabitants which is why we select & design our model homes to showcase a variety of floorplans, options & features available to you!

We are sure to have a floorplan with the options & features that you will love... but if you don't see something you are looking for please let us know, because each of our display homes offer multiple layouts & can be built to accommodate you and your family!



Heckaman Homes

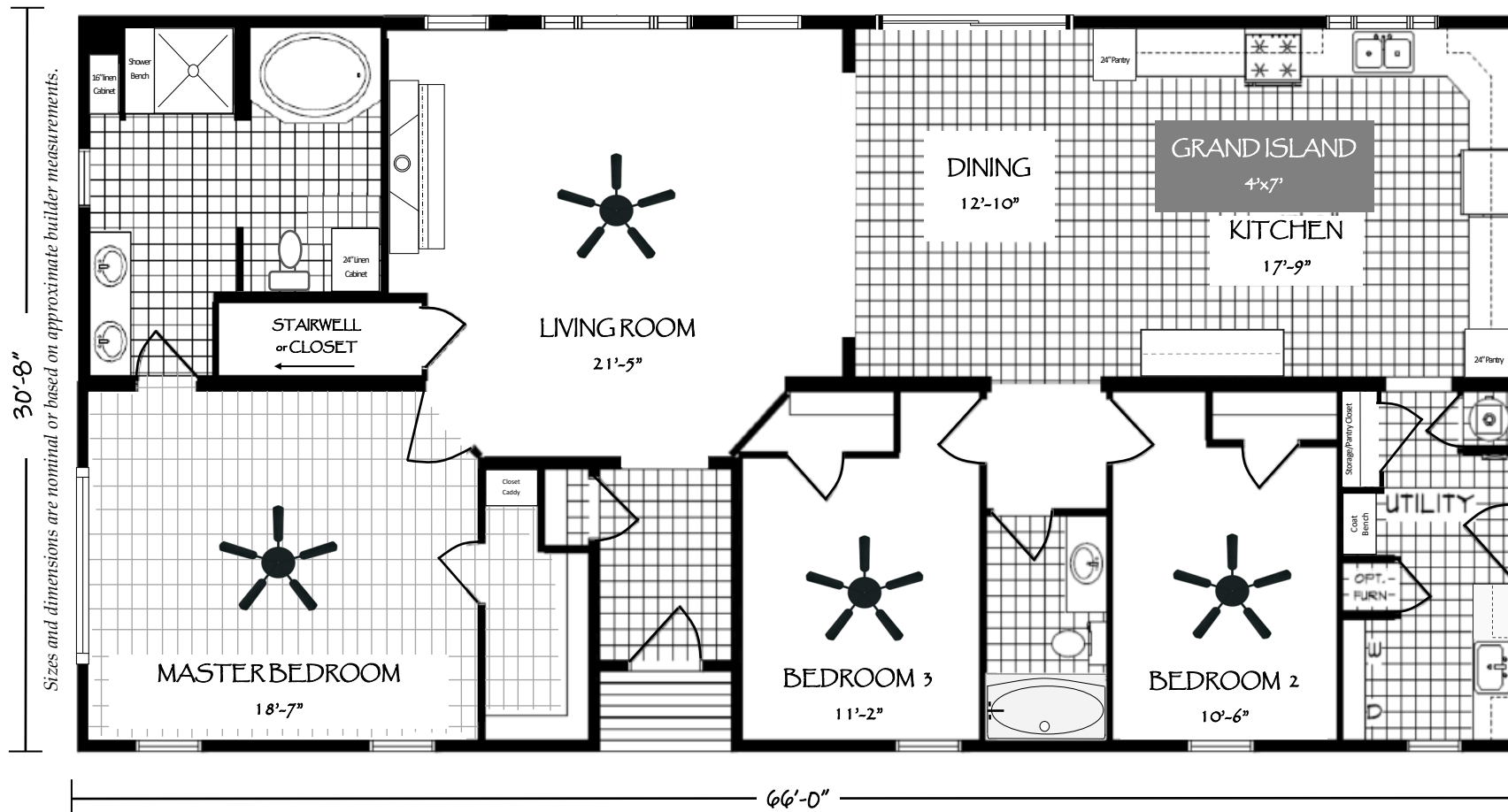
MODEL HOMES ARE AVAILABLE FOR TOURS
MONDAY-FRIDAY 9am-5pm & SATURDAY 9-4

If for some reason our hours are not convenient and you need to schedule a private tour please call or email us and we will be happy to accommodate you!

Display Home 605 - Built by MHE Inc.
 Whispering Forest - Modular Construction (Illinois State Code)
 2,024 Square Feet · 3 Bedroom / 2 Bath · 32' x 66'

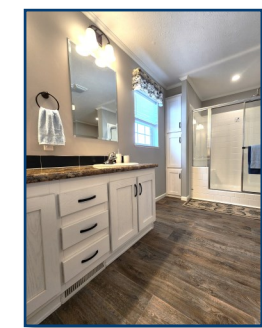
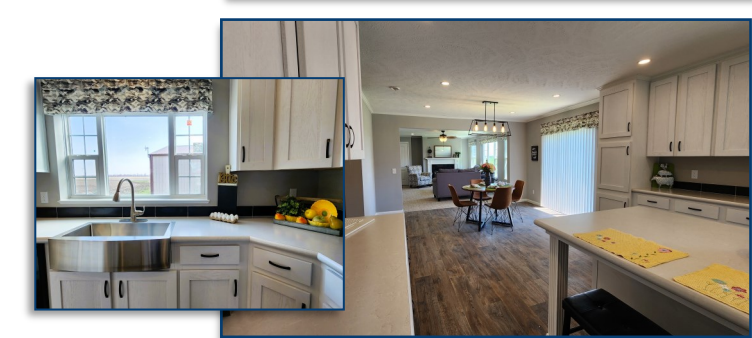


NOTES:



Love the floorplan - but maybe it's too big or maybe too small...
 Floorplans similar to **The Whispering Forest** are available in different sizes and can be built to meet either Modular Construction (State Code) or Manufactured Construction (National HUD Code)
 The specific floorplan in our model home #605 (as shown above) is based on the standard floorplan for **The Whispering Forest** offered by MHE Inc.

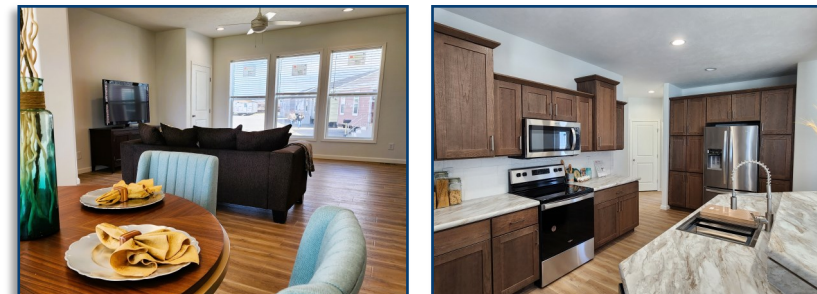
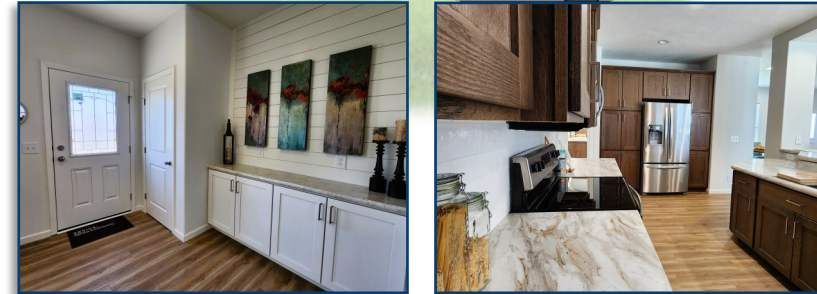
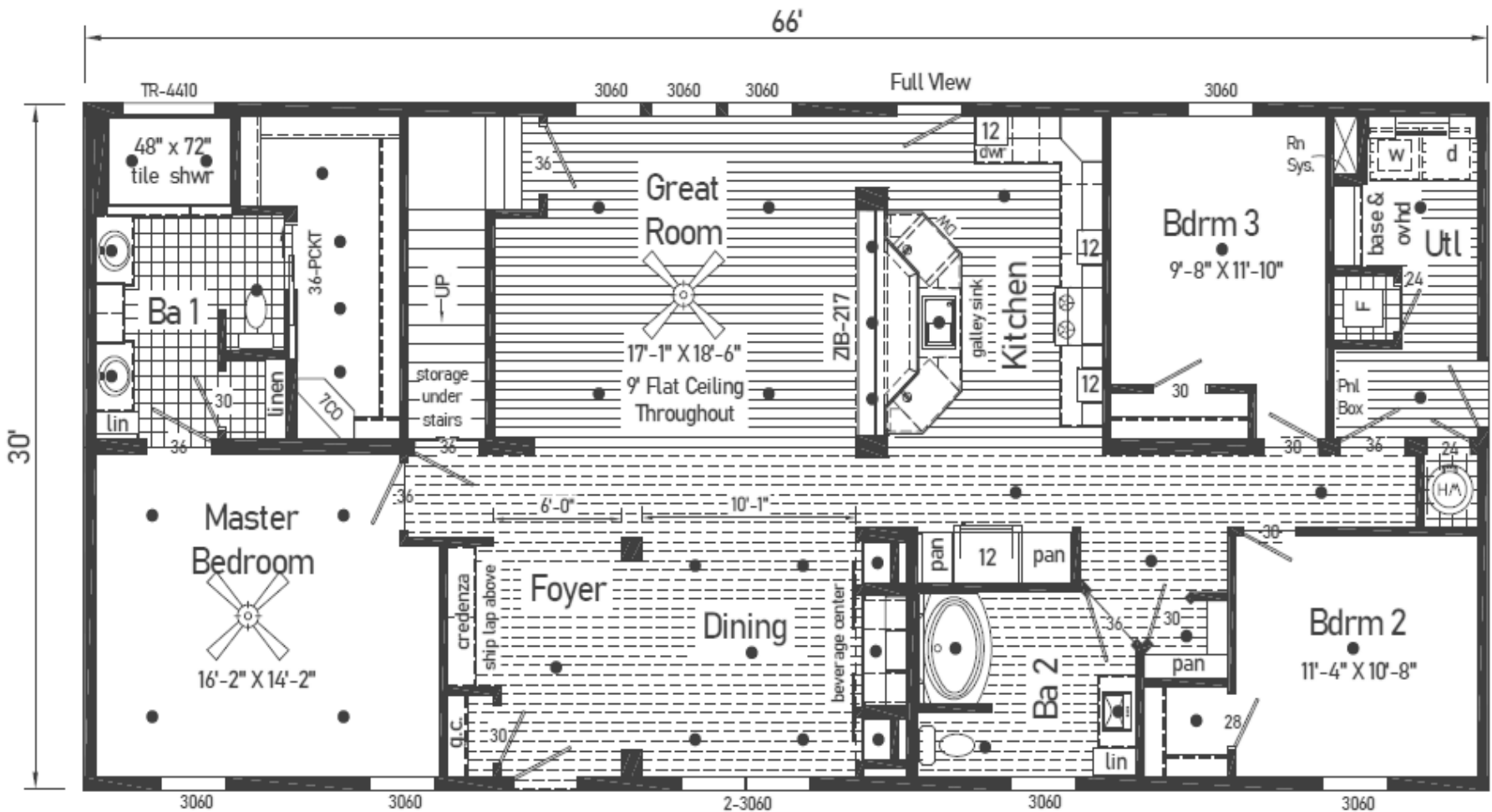
 The modifications made to the standard floorplan are meant to showcase the upgrades available, as well as, the ability to customize floorplans to meet your lifestyle!
 Please contact us for detailed information including the price, on this or any of our display homes.



Display Home 597 - Built by Commodore Homes of Indiana
 Landmark Ultra 12 - Modular Construction (Illinois State Code)
 1,980 Square Feet · 3 Bedroom / 2 Bath · 30' x 66'



NOTES:



Love the floorplan - but maybe it's too big or maybe too small...
 Floorplans similar to **The Landmark Ultra 12** are available in different sizes & can be built to meet either Modular Construction (State Code) or Manufactured Construction (National HUD Code)

The specific floorplan in our model home **#597** (as shown above) is based on the standard floorplan for **The Ultra 12** offered by Commodore Homes of Indiana

 Commodore Homes
INDIANA

The modifications made to the standard floorplan are meant to showcase the upgrades available, as well as, the ability to customize floorplans to meet your lifestyle!

Please contact us for detailed information including the price, on this or any of our display homes.



Display Home 571 - Built by MHE Inc.
Boone Creek - Manufactured Construction (National HUD Code)
1,867 Square Feet · 4 Bedroom / 2 Bath · 28' x 70' - 74'

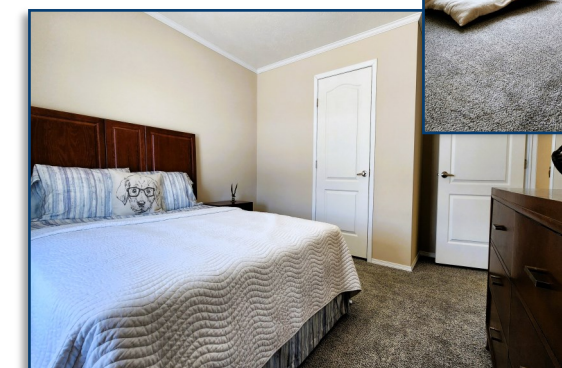
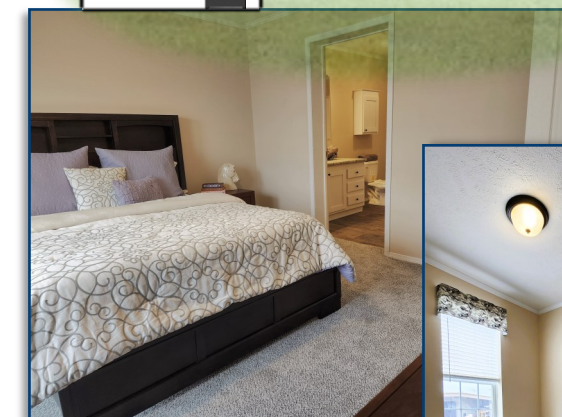
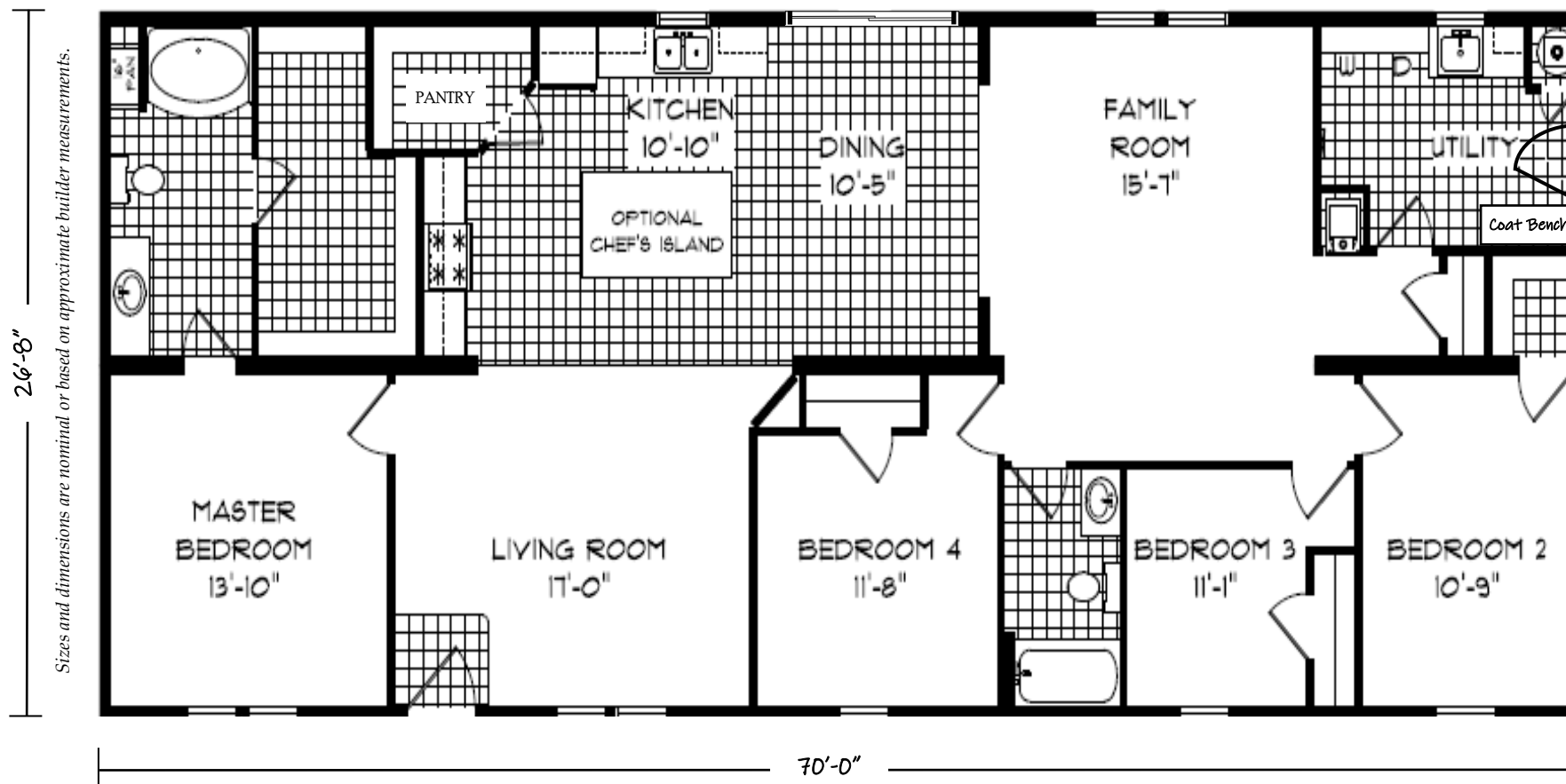


SOLD!

#ABetterWayToBuild

NOTES:

Blank lined area for notes.



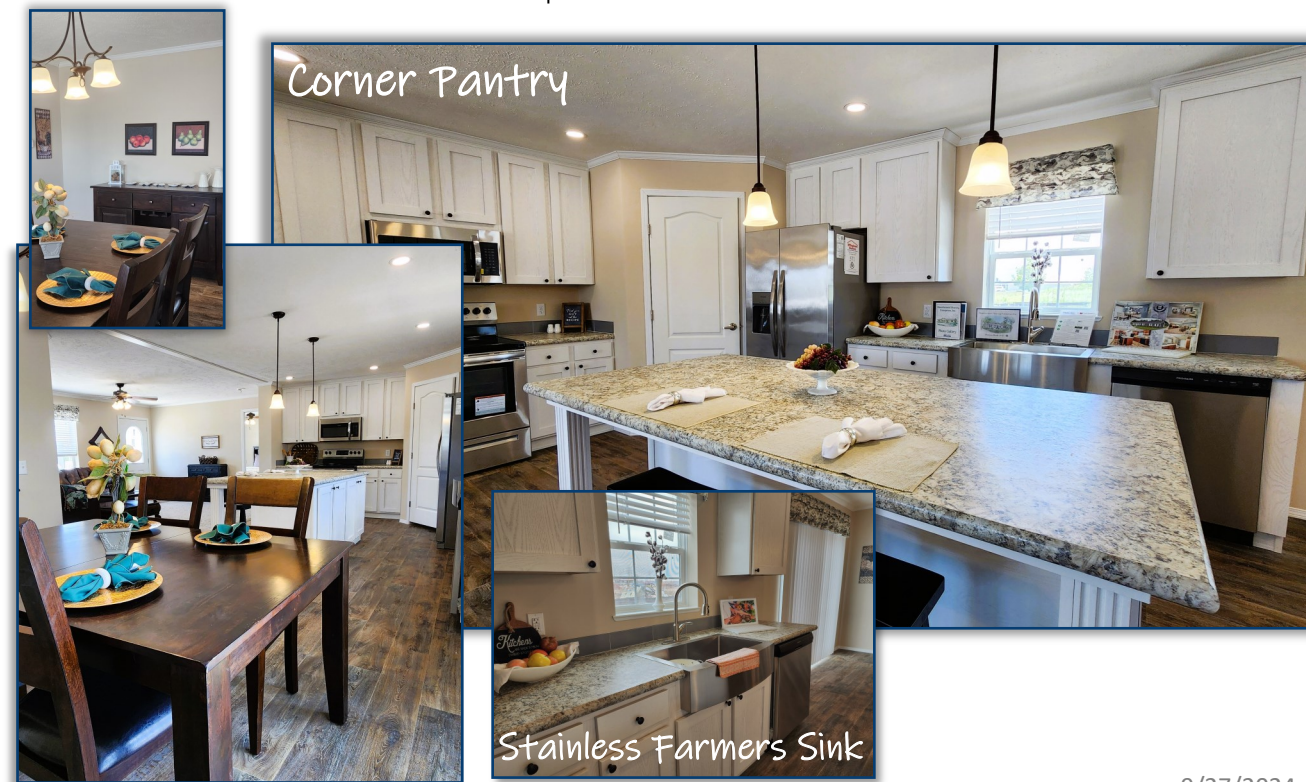
Love the floorplan - but maybe it's too big or maybe too small...
Floorplans similar to **The Boone Creek** are available in different sizes and can be built to meet either Modular Construction (State Code) or Manufactured Construction (National HUD Code)

The specific floorplan in our model home #571 (as shown above) is based on the standard floorplan for **The Boone Creek** offered by MHE Inc.



The modifications made to the standard floorplan are meant to showcase the upgrades available, as well as, the ability to customize floorplans to meet your lifestyle!

Please contact us for detailed information including the price, on this or any of our display homes.



Display Home 582 - Built by MHE Inc.

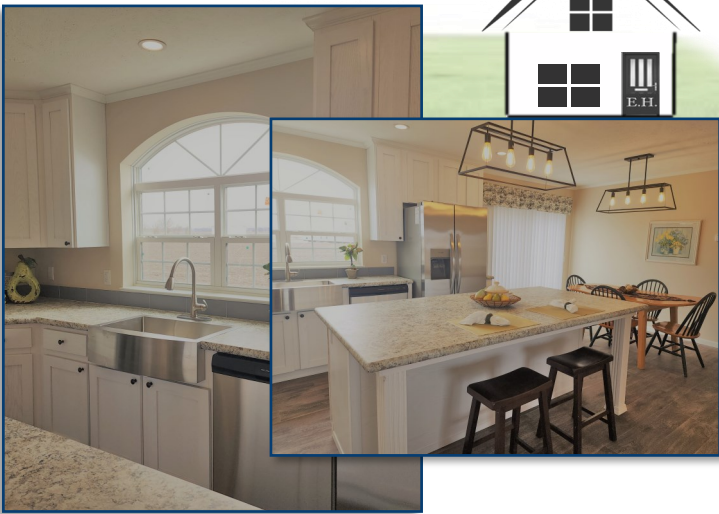
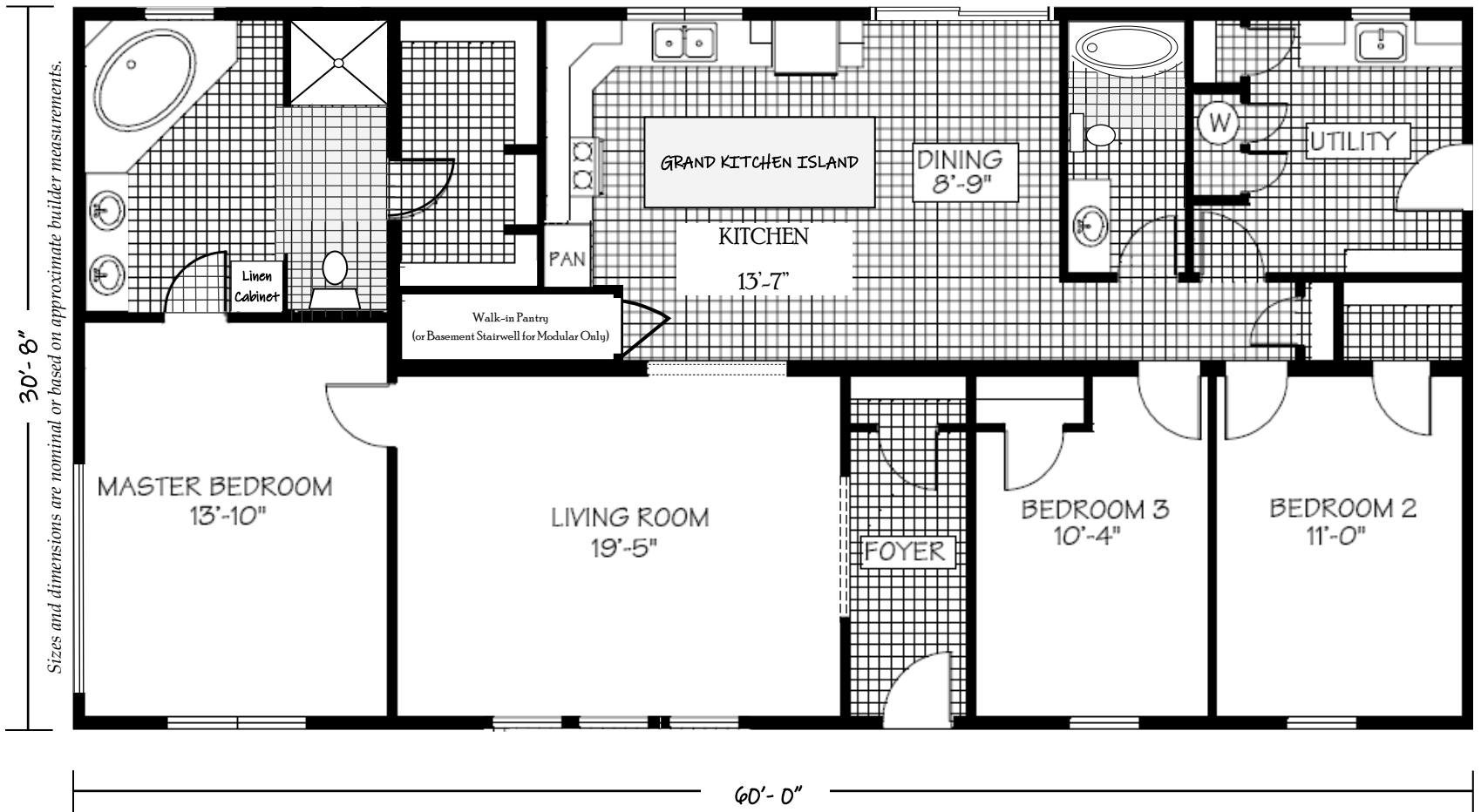
Willow Forest - Modular Construction (Illinois State Code)

1,840 Square Feet • 3 Bedroom / 2 Bath • 32' x 60'

Buy Now
or

Design Your Dream Home Today!

NOTES:

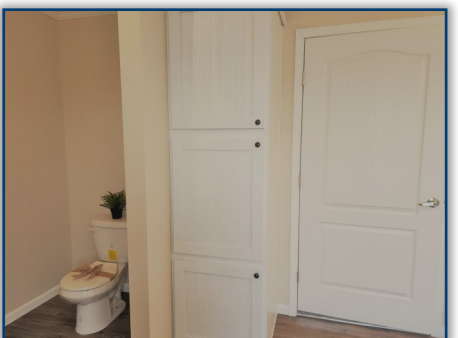
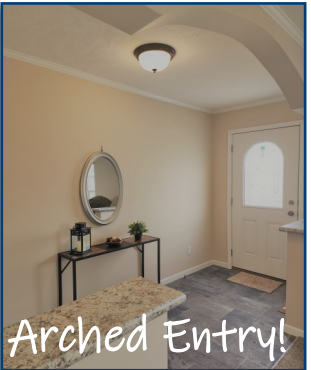


Love the floorplan - but maybe it's too big or maybe too small...
 Floorplans similar to **The Willow Forest** are available in different sizes and can be built to meet either Modular Construction (State Code) or Manufactured Construction (National HUD Code)
 The specific floorplan in our model home **#582** (as shown above) is based on the standard floorplan for **The Willow Forest** offered by MHE Inc.



The modifications made to the standard floorplan are meant to showcase the upgrades available, as well as, the ability to customize floorplans to meet your lifestyle!

Please contact us for detailed information including the price, on this or any of our display homes.



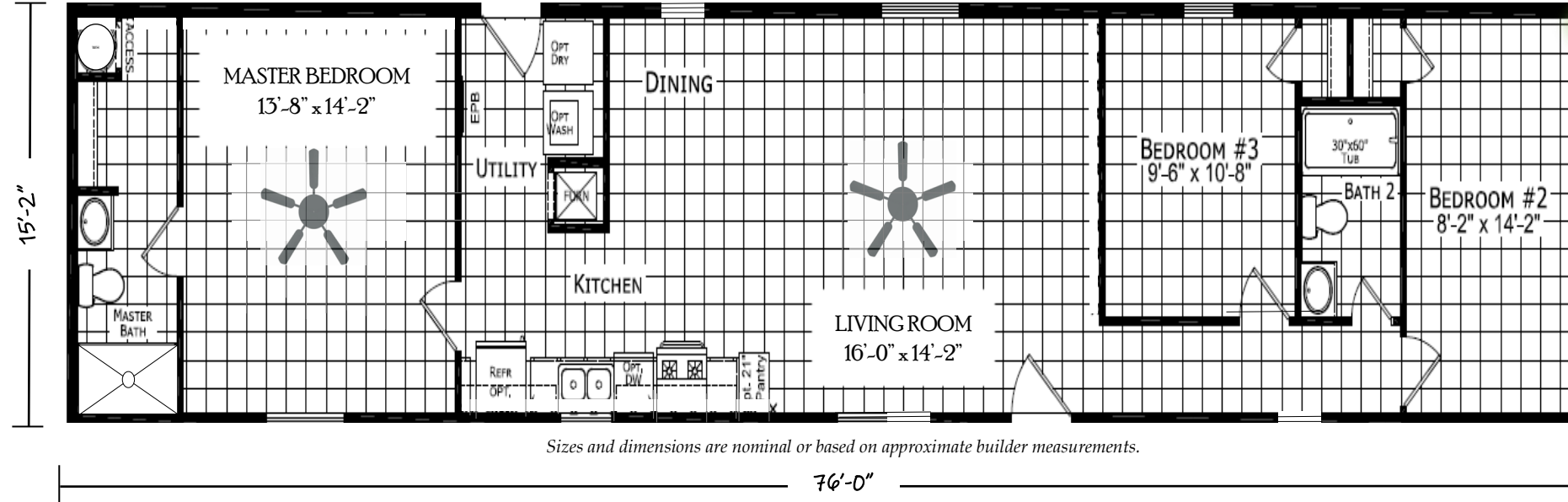
Display Home 577 - Built by Dutch Housing
 Single Section - Manufactured Construction (National HUD Code)
 1,152 Square Feet · 3 Bedroom / 2 Bath · 16' x 76' - 80'

Special offer

CLEARANCE



NOTES:



Features included but not limited to:

- Delivery within 100 miles
- Setup, Level & Anchor
- Central Air Conditioning
- White Vinyl Perimeter Skirting
- Federal HUD Installation Inspection
- White Vinyl Siding
- Black Shutters
- Residential Craftsman Front Door
- Black Shingle Roof
- DRYWALL Throughout with Primer
- 2" x 6" Sidewalls
- Spacious Shower in Master Bath
- Thermal Zone 3 Insulation (28-19-11)
- Low E Vinyl Gridded Windows
- Electric Furnace & 30 Gallon Electric Water Heater
- 200 Amp Electric Panel Box
- Backsplash Throughout
- Black Deluxe 4 Piece Kitchen Appliance Package
- Hardwood Cabinets w/ Concealed Door Hinges, Deluxe Drawer Guides & Center Shelves in Base Cabinets
- Extended Warranty



Please contact us for detailed information including the price, on this or any of our display homes.

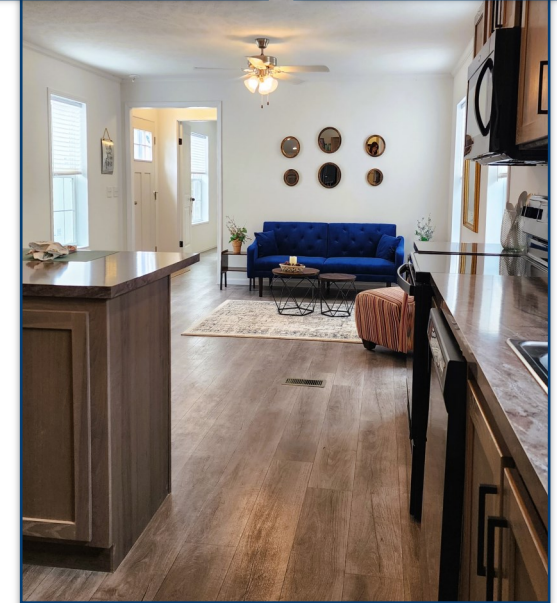
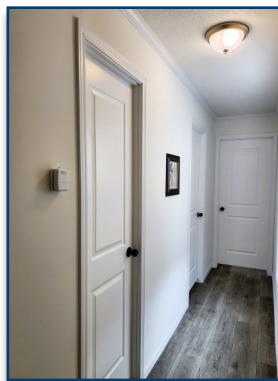
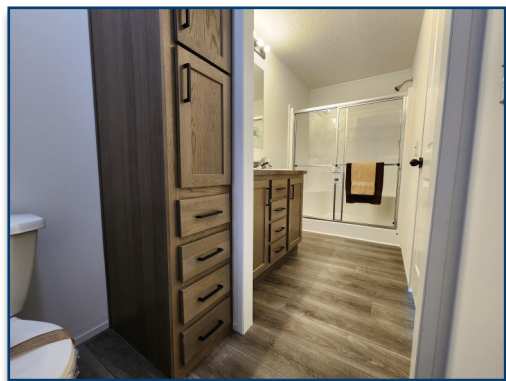
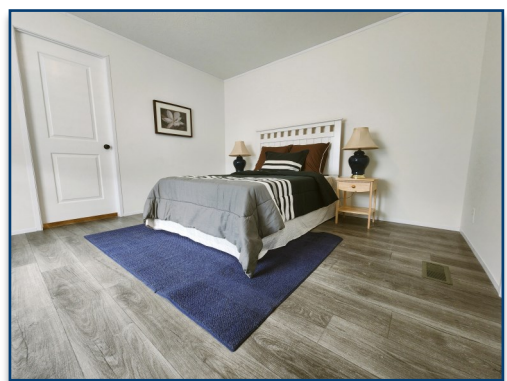
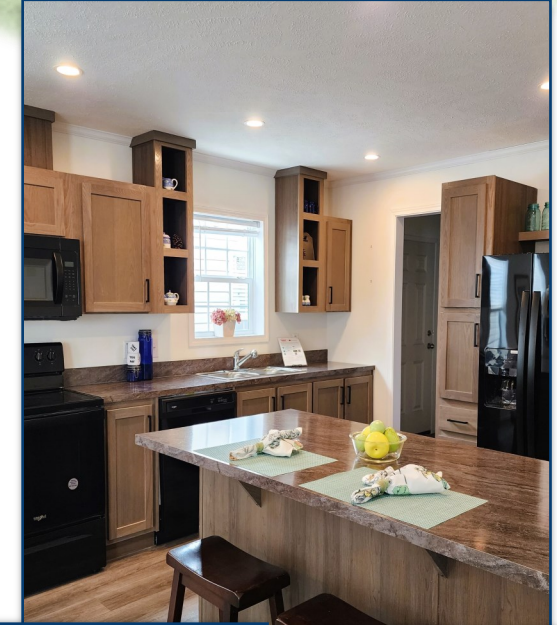
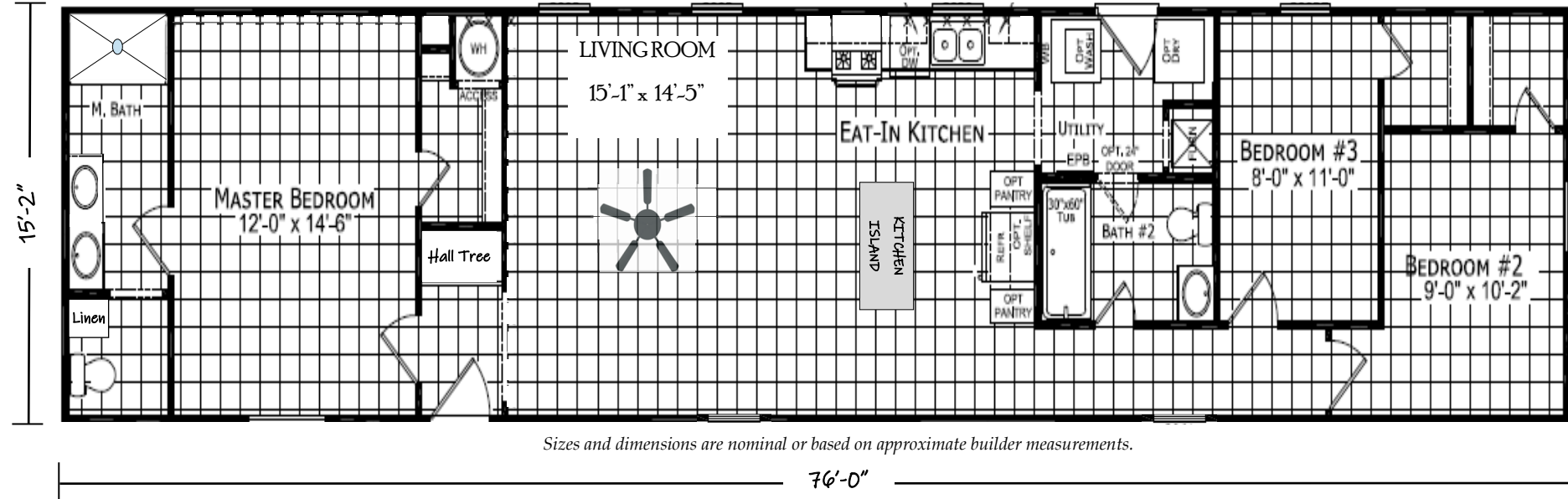
Display Home 578 - Built by Dutch Housing

Single Section - Manufactured Construction (National HUD Code)

1,152 Square Feet · 3 Bedroom / 2 Bath · 16' x 76' - 80'



NOTES:



Features included but not limited to:

- Delivery within 100 miles
- Setup, Level & Anchor
- Central Air Conditioning
- White Vinyl Perimeter Skirting
- Federal HUD Installation Inspection
- Clay Colored Vinyl Siding
- Wine Colored Shutters
- Residential Craftsman Front Door
- Shingle Roof in Weatherwood Color
- DRYWALL Throughout with Primer
- 2"x 6" Sidewalls
- Spacious Shower in Master Bath
- Thermal Zone 3 Insulation (28-19-11)
- Low E Vinyl Gridded Windows
- Electric Furnace & 30 Gallon Electric Water Heater
- 200 Amp Electric Panel Box
- Backsplash Throughout
- Black Deluxe 4 Piece Kitchen Appliance Package
- Hardwood Cabinets w/Concealed Door Hinges, Deluxe Drawer Guides & Center Shelves in Base Cabinets
- Extended Warranty



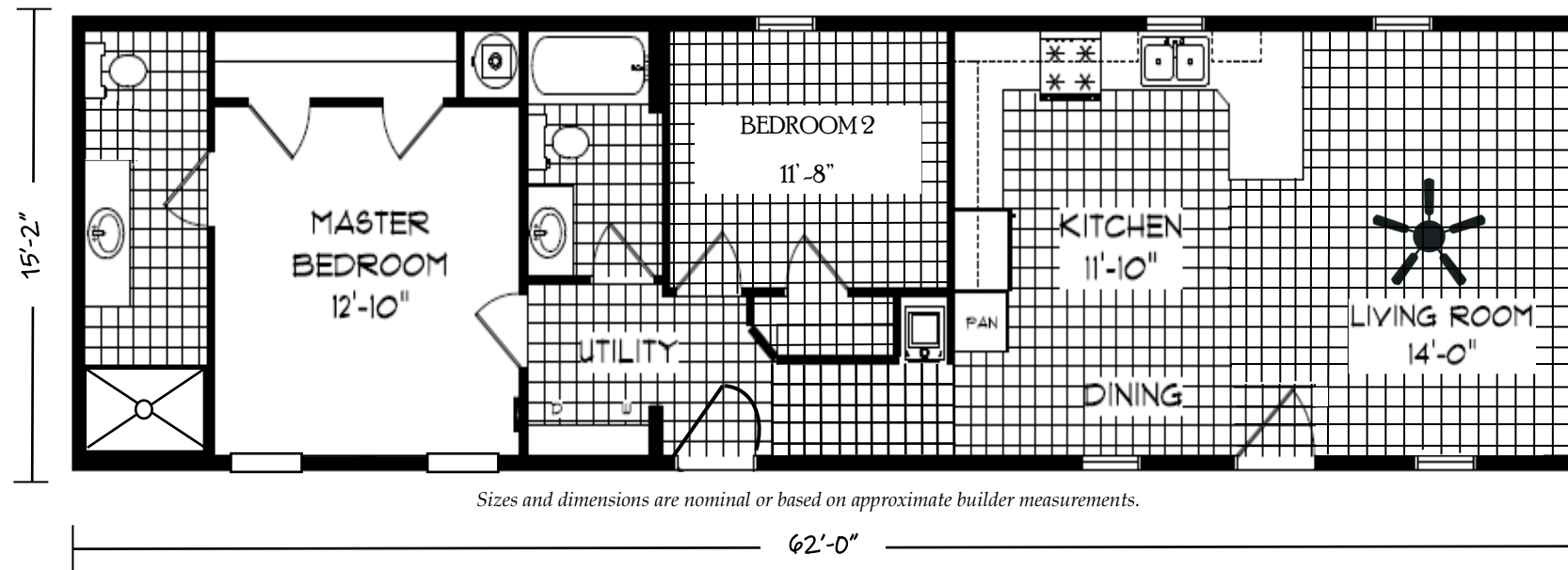
Please contact us for detailed information including the price, on this or any of our display homes.

Display Home 587 - Built by MHE Inc.

Single Section - Manufactured Construction (National HUD Code)

955 Square Feet · 2 Bedroom / 2 Bath · 16' x 62' - 66'

NOTES:



Features included but not limited to:

- Delivery within 100 miles
- Setup, Level & Anchor
- Central Air Conditioning
- White Vinyl Perimeter Skirting
- Federal HUD Installation Inspection
- Clay Colored Vinyl Siding
- Green Colored Shutters
- 36" Steel Front Door with Storm Door
- Onyx Black Shingle Roof
- DRYWALL Throughout with Primer
- 2"x 6" Sidewalls
- Spacious Shower in Master Bath
- Thermal Zone 3 Insulation (30-19-11)
- Double Pane Windows
- Electric Furnace
- 40 Gallon Electric Water Heater
- 200 Amp Electric Panel Box
- Ceramic Backsplash Throughout
- Black Deluxe 4 Piece Kitchen Appliance Package
- Oak Stained Hardwood Cabinets w/Concealed Door Hinges



Please contact us for detailed information including the price, on this or any of our display homes.

